

CLEC4D Polyclonal Antibody

catalog number: E-AB-18220

Note: Centrifuge before opening to ensure complete recovery of vial contents.

Description

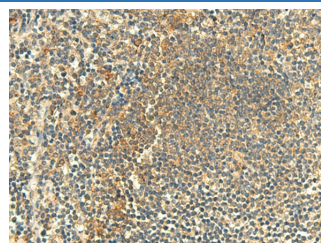
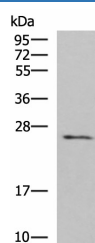
Reactivity	Human
Immunogen	Fusion protein of human CLEC4D
Host	Rabbit
Isotype	IgG
Purification	Antigen affinity purification
Conjugation	Unconjugated
buffer	Phosphate buffered solution, pH 7.4, containing 0.05% stabilizer and 50% glycerol.

Applications

Recommended Dilution

WB	1:500-1:2000
IHC	1:50-1:300

Data



Western blot analysis of Human fetal brain tissue lysate using CLEC4D Polyclonal Antibody at dilution of 1:700
Observed-MV: Refer to figures
Calculated-MV: 25 kDa

Immunohistochemistry of paraffin-embedded Human tonsil tissue using CLEC4D Polyclonal Antibody at dilution of 1:50 (x200)

Preparation & Storage

Storage	Store at -20°C Valid for 12 months. Avoid freeze / thaw cycles.
Shipping	The product is shipped with ice pack, upon receipt, store it immediately at the temperature recommended.

Background

This gene encodes a member of the C-type lectin/C-type lectin-like domain (CTL/CTLD) superfamily. Members of this family share a common protein fold and have diverse functions, such as cell adhesion, cell-cell signalling, glycoprotein turnover, and roles in inflammation and immune response. This gene is closely linked to other CTL/CTLD superfamily members, on chromosome 12p13 in the natural killer gene complex region.

For Research Use Only