

CLTB Polyclonal Antibody

catalog number: E-AB-19170

Note: Centrifuge before opening to ensure complete recovery of vial contents.

Description

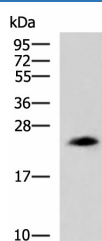
| | |
|---------------------|--|
| Reactivity | Human;Mouse |
| Immunogen | Fusion protein of human CLTB |
| Host | Rabbit |
| Isotype | IgG |
| Purification | Antigen affinity purification |
| Conjugation | Unconjugated |
| buffer | Phosphate buffered solution, pH 7.4, containing 0.05% stabilizer and 50% glycerol. |

Applications

Recommended Dilution

| | |
|------------|--------------|
| WB | 1:500-1:2000 |
| IHC | 1:50-1:200 |

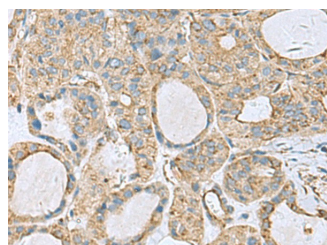
Data



Western blot analysis of NIH/3T3 cell lysate using CLTB Polyclonal Antibody at dilution of 1:800

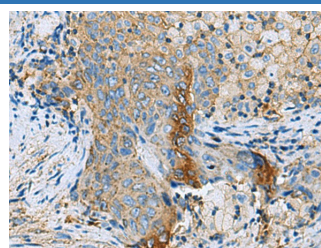
Observed-MV:Refer to figures

Calculated-MV:25 kDa



Immunohistochemistry of paraffin-embedded Human thyroid cancer tissue using CLTB Polyclonal Antibody at dilution of

1:70(x200)



Immunohistochemistry of paraffin-embedded Human cervical cancer tissue using CLTB Polyclonal Antibody at dilution of 1:70(x200)

Preparation & Storage

| | |
|-----------------|--|
| Storage | Store at -20°C Valid for 12 months. Avoid freeze / thaw cycles. |
| Shipping | The product is shipped with ice pack,upon receipt,store it immediately at the temperature recommended. |

Background

Clathrin is the major protein of the polyhedral coat of coated pits and vesicles which entrap specific macromolecules during receptor-mediated endocytosis. The clathrin molecule has a triskelion shape. Each clathrin triskelion is composed of three identical heavy chains (180 kDa) and three light chains of two types, LCA (CLTA) and LCB (CLTB) (30-40 kDa). The light chain subunits are thought to regulate the formation or disassembly of clathrin coats.

For Research Use Only