

PSCA Polyclonal Antibody

catalog number: E-AB-53288

Note: Centrifuge before opening to ensure complete recovery of vial contents.

Description

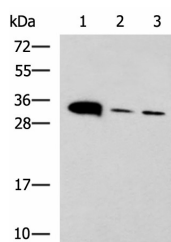
Reactivity	Human;Mouse
Immunogen	Synthetic peptide of human PSCA
Host	Rabbit
Isotype	IgG
Purification	Antigen affinity purification
Conjugation	Unconjugated
Buffer	Phosphate buffered solution, pH 7.4, containing 0.05% stabilizer and 50% glycerol.

Applications

Recommended Dilution

WB	1:500-1:2000
IHC	1:20-1:100

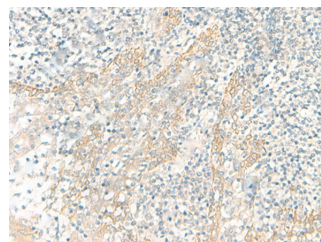
Data



Western blot analysis of Mouse heart tissue Mouse stomach tissue and PC-3 cell lysates using PSCA Polyclonal Antibody at dilution of 1:650

Observed-MW:Refer to figures

Calculated-MW:13 kDa



Immunohistochemistry of paraffin-embedded Human tonsil tissue using PSCA Polyclonal Antibody at dilution of 1:25(×200)

Preparation & Storage

Storage	Store at -20°C Valid for 12 months. Avoid freeze / thaw cycles.
Shipping	The product is shipped with ice pack,upon receipt,store it immediately at the temperature recommended.

Background

PSCA (Prostate Stem Cell antigen) is a cell surface antigen, which is overexpressed in ~40% of primary prostate cancers and in as many as 100% of metastatic ones. PSCA is also overexpressed in a majority of transitional cell and pancreatic carcinomas. Antibody directed against PSCA inhibits tumorigenesis, slows tumor growth, prolongs survival and prevents metastasis in a preclinical xenograft model indicating that PSCA may have utility as a prognostic marker and/or therapeutic target in prostate cancer.

For Research Use Only