

Recombinant Human PGD protein (His tag)

Catalog Number:PDEH100362



Note: Centrifuge before opening to ensure complete recovery of vial contents.

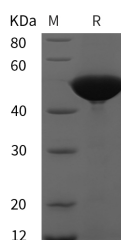
Description

| | |
|------------------------------------|--|
| Synonyms | 6-phosphogluconate dehydrogenase;Decarboxylating;PGD;PGDH;6PGD |
| Species | Human |
| Expression Host | E.coli |
| Sequence | Met 1-Ala 483 |
| Accession | P52209 |
| Calculated Molecular Weight | 53.0 kDa |
| Observed molecular weight | 55 kDa |
| Tag | N-His & C-His |

Properties

| | |
|-----------------------|---|
| Purity | > 95 % as determined by reducing SDS-PAGE. |
| Endotoxin | Please contact us for more information. |
| Storage | Generally, lyophilized proteins are stable for up to 12 months when stored at -20 to -80°C. Reconstituted protein solution can be stored at 4-8°C for 2-7 days. Aliquots of reconstituted samples are stable at < -20°C for 3 months. |
| Shipping | This product is provided as lyophilized powder which is shipped with ice packs. |
| Formulation | Lyophilized from sterile PBS, pH 7.4. Normally 5 % - 8 % trehalose, mannitol and 0.01 % Tween80 are added as protectants before lyophilization. Please refer to the specific buffer information in the printed manual. |
| Reconstitution | Please refer to the printed manual for detailed information. |

Data



> 95 % as determined by reducing SDS-PAGE.

Background

6-phosphogluconate dehydrogenase(PGD) is a cytoplasm-located protein; and belongs to the 6-phosphogluconate dehydrogenase family. 6PGD is the second dehydrogenase in the pentose phosphate shunt. It catalyzes the oxidative decarboxylation of 6-phosphogluconate to ribulose 5-phosphate and CO₂; with concomitant reduction of NADP to NADPH. Mutations within the gene coding this enzyme result in 6-phosphogluconate dehydrogenase deficiency; an autosomal hereditary disease effecting the red blood cells.

For Research Use Only

A Reliable Research Partner in Life Science and Medicine

Toll-free: 1-888-852-8623

Web: www.elabscience.com

Tel: 1-832-243-6086

Email: techsupport@elabscience.com

Fax: 1-832-243-6017