

## PerCP/Cyanine5.5 Anti-Human CD90 Antibody[5E10]

**Catalog Number:** E-AB-F1167J

**Note:** Centrifuge before opening to ensure complete recovery of vial contents.

### Description

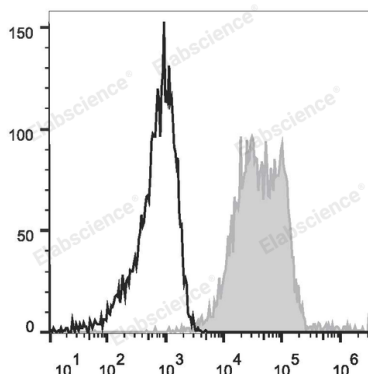
|                                |  |
|--------------------------------|--|
| <b>Reactivity</b>              | Human  |
| <b>Host</b>                    | Mouse  |
| <b>Isotype</b>                 | Mouse IgG1, κ  |
| <b>Clone No.</b>               | 5E10   |
| <b>Isotype Control</b>         | PerCP/Cyanine5.5 Mouse IgG1, κ Isotype Control[MOPC-21] [Product E-AB-F09792J]   |
| <b>Conjugation</b>             | PerCP/Cyanine 5.5  |
| <b>Conjugation Information</b> | PerCP/Cyanine5.5 is designed to be excited by the blue laser (488 nm) and detected using an optical filter centered near 675 nm (e.g., a 690/50 nm bandpass filter). |
| <b>Storage Buffer</b>          | Phosphate buffered solution, pH 7.2, containing 0.09% stabilizer and 1% protein protectant.  |

### Applications

### Recommended usage

|            |   |
|------------|---|
| <b>FCM</b> | Each lot of this antibody is quality control tested by flow cytometric analysis. <b>The amount of the reagent is suggested to be used 5 µL of antibody per test (million cells in 100 µL staining volume or per 100 µL of whole blood).</b> Please check your vial before the experiment. Since applications vary, the appropriate dilutions must be determined for individual use. |
|------------|---|

### Data



Human erythroleukemic cell line (HEL) are stained with PerCP/Cyanine5.5 Anti-Human CD90 Antibody (filled gray histogram) or Mouse IgG1 Isotype Control PerCP/Cyanine5.5 (empty black histogram).

### Preparation & Storage

|                 |   |
|-----------------|---|
| <b>Storage</b>  | Keep as concentrated solution.<br>Store at 2-8°C and protected from prolonged exposure to light. Do not freeze. |
| <b>Shipping</b> | Ice bag   |

### Antigen Information

|                        |                         |
|------------------------|-------------------------|
| <b>Alternate Names</b> | CDw90;FLJ33325;T25;Thy1 |
| <b>Uniprot ID</b>      | P04216                  |
| <b>Gene ID</b>         | 7070                    |

### For Research Use Only

## Background

CD90 is a 25-35 kD GPI-anchored protein, also known as Thy-1. It belongs to the Ig superfamily. Human CD90 is expressed on neuronal cells, a subset of CD34+ cells, a subset of fetal liver cells and fetal thymocytes, fibroblasts, activated endothelial cells, and some leukemia cell lines. CD34+CD90+ cells are primitive hematopoietic stem cells. It has been reported that Thy-1 binds with  $\beta 2$  and  $\beta 3$  integrins and plays bimodal roles in the regulation of cell adhesion and neurite outgrowth, and inhibits hematopoietic stem cells proliferation and differentiation.

## For Research Use Only