

Recombinant E.coli Beta-Glucuronidase/Uida/Beta-Gus Protein (His Tag)

Catalog Number: PKSQ050059

Note: Centrifuge before opening to ensure complete recovery of vial contents.

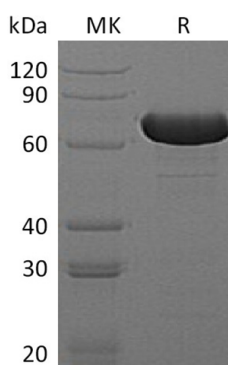
Description

| | |
|----------------------|---|
| Species | E.coli |
| Source | E.coli-derived E.coli Uida/Beta-Gus protein Met1-Gln603, with an N-terminal His |
| Calculated MW | 69.9 kDa |
| Observed MW | 72 kDa |
| Accession | P05804 |
| Bio-activity | Not validated for activity |

Properties

| | |
|----------------------|---|
| Purity | > 95 % as determined by reducing SDS-PAGE. |
| Concentration | Subject to label value. |
| Endotoxin | < 1.0 EU per µg of the protein as determined by the LAL method. |
| Storage | Store at < -20°C, stable for 6 months. Please minimize freeze-thaw cycles. |
| Shipping | This product is provided as liquid. It is shipped at frozen temperature with blue ice/ gel packs. Upon receipt, store it immediately at < - 20°C. |
| Formulation | Supplied as a 0.2 µm filtered solution of PBS, pH7.4. |

Data



> 95 % as determined by reducing SDS-PAGE.

Background

Beta-D-glucuronidase from E.coli is a highly specific enzyme in hydrolyzing glucuronides. Beta-D-glucuronidase (GLUase) activity can be measured as the rate of production of fluorescent methylumbelliferone (MU), resulting from the hydrolysis of the substrate 4-methylumbelliferyl-β-d-glucuronide (MUGLU), which is an effective and rapid method for detection and verification of E. coli in food, water, and environmental samples. High purity recombinant beta-Glucuronidase is used in research, biochemical enzyme assays and in vitro diagnostic analysis, detecting a wide range of drugs such as opioids, benzodiazepines, steroids, cannabinoids, and others.

For Research Use Only

Toll-free: 1-888-852-8623
Web: www.elabscience.com

Tel: 1-832-243-6086
Email: techsupport@elabscience.com

Fax: 1-832-243-6017