

Serpin A1 Polyclonal Antibody

catalog number: E-AB-40634

Note: Centrifuge before opening to ensure complete recovery of vial contents.

Description

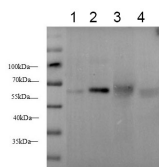
Reactivity	Human;Mouse;Rat
Immunogen	Recombinant Rat Serpin A1 protein expressed by E.coli
Host	Rabbit
Isotype	IgG
Purification	Antigen Affinity Purification
Conjugation	Unconjugated
Buffer	PBS with 0.05% Proclin300, 1% protective protein and 50% glycerol, pH7.4

Applications

Recommended Dilution

WB	1:100-1:200
IHC	1:2000-1:4000

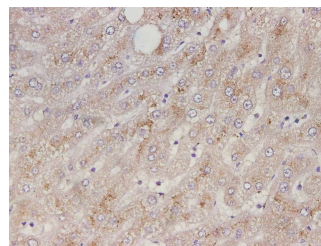
Data



Western blot with anti-alpha 1 Antitrypsin Polyclonal antibody at dilution of 1:200. lane 1: Rat kidney tissue, lane 2: Mouse liver tissue, lane 3: Human plasma, lane 4: HepG2 whole cell lysate

Observed-MW:60 kDa

Calculated-MW:46 kDa



Immunohistochemistry of paraffin-embedded Human liver tissue using Serpin A1 Polyclonal Antibody at dilution of 1:3500(×400)

Preparation & Storage

Storage	Store at -20°C Valid for 12 months. Avoid freeze / thaw cycles.
Shipping	The product is shipped with ice pack, upon receipt, store it immediately at the temperature recommended.

Background

Serpin A1 is the archetypal member of the Serpin superfamily of the serine protease inhibitors. As one of the most abundant proteinase inhibitors in the circulation, it is synthesized in the liver and secreted into the bloodstream with the major function to protect tissues against neutrophil elastase. A severe Serpin A1 deficiency leads to several clinical complications such as pulmonary emphysema, juvenile hepatitis, cirrhosis, and hepatocellular carcinoma.