

# Recombinant Human SNAP25/SUP Protein (His Tag)

Catalog Number:PKSH031077



**Note:** Centrifuge before opening to ensure complete recovery of vial contents.

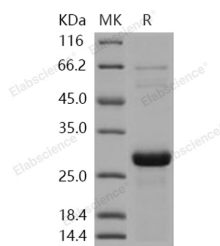
## Description

<b>Synonyms</b>	bA416N4.2;dJ1068F16.2;RIC-4;RIC4;SEC9;SNAP;SNAP-25
<b>Species</b>	Human
<b>Expression Host</b>	E.coli
<b>Sequence</b>	Met 1-Gly 206
<b>Accession</b>	P60880-1
<b>Calculated Molecular Weight</b>	24.8 kDa
<b>Observed molecular weight</b>	28 kDa
<b>Tag</b>	N-His

## Properties

<b>Purity</b>	> 90 % as determined by reducing SDS-PAGE.
<b>Endotoxin</b>	Please contact us for more information.
<b>Storage</b>	Generally, lyophilized proteins are stable for up to 12 months when stored at -20 to -80°C. Reconstituted protein solution can be stored at 4-8°C for 2-7 days. Aliquots of reconstituted samples are stable at < -20°C for 3 months.
<b>Shipping</b>	This product is provided as lyophilized powder which is shipped with ice packs.
<b>Formulation</b>	Lyophilized from sterile PBS, pH 7.4 Normally 5 % - 8 % trehalose, mannitol and 0.01% Tween80 are added as protectants before lyophilization. Please refer to the specific buffer information in the printed manual.
<b>Reconstitution</b>	Please refer to the printed manual for detailed information.

## Data



> 90 % as determined by reducing SDS-PAGE.

## Background

Synaptosomal-associated protein 25, also known as Super protein, Synaptosomal-associated 25 kDa protein, SNAP25 and SNAP, is a cytoplasm and cell membrane protein which belongs to the SNAP-25 family. SNAP25 / SUP contains 2t-SNARE coiled-coil homology domains. SNAP25 / SUP is a membrane bound protein anchored to the cytosolic face of membranes via palmitoyl side chains in the middle of the molecule. SNAP25 / SUP protein is a component of the SNARE complex, which is proposed to account for the specificity of membrane fusion and to directly execute fusion by forming a tight complex that brings the synaptic vesicle and plasma membranes together. SNAP25 / SUP is a Q-SNARE protein contributing two  $\alpha$ -helices in the formation of the exocytotic fusion complex in neurons where it assembles with syntaxin-1 and synaptobrevin. SNAP25 / SUP is involved in the molecular regulation of neurotransmitter release. It may

## For Research Use Only

A Reliable Research Partner in Life Science and Medicine

Toll-free: 1-888-852-8623

Web: [www.elabscience.com](http://www.elabscience.com)

Tel: 1-832-243-6086

Email: [techsupport@elabscience.com](mailto:techsupport@elabscience.com)

Fax: 1-832-243-6017

# Recombinant Human SNAP25/SUP Protein (His Tag)

Catalog Number:PKSH031077



play an important role in the synaptic function of specific neuronal systems. SNAP25 / SUP associates with proteins involved in vesicle docking and membrane fusion. SNAP25 / SUP regulates plasma membrane recycling through its interaction with CENPF. SNAP25 / SUP inhibits P/Q- and L-type voltage-gated calcium channels located presynaptically and interacts with the synaptotagmin C2B domain in  $\text{Ca}^{2+}$ -independent fashion. In glutamatergic synapses SNAP25 / SUP decreases the  $\text{Ca}^{2+}$  responsiveness, while it is naturally absent in GABAergic synapses.

## For Research Use Only

A Reliable Research Partner in Life Science and Medicine

Toll-free: 1-888-852-8623

Web: [www.elabscience.com](http://www.elabscience.com)

Tel: 1-832-243-6086

Email: [techsupport@elabscience.com](mailto:techsupport@elabscience.com)

Fax: 1-832-243-6017