

## Recombinant Human Sell Protein(His Tag)

**Catalog Number:** PDMH100243

**Note:** Centrifuge before opening to ensure complete recovery of vial contents.

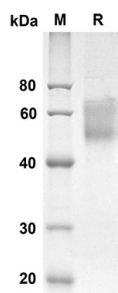
### Description

<b>Species</b>	Human
<b>Source</b>	Mammalian-derived Human SELL protein Trp39-Asn332, with an C-terminal His
<b>Calculated MW</b>	32.2 kDa
<b>Observed MW</b>	50-70 kDa
<b>Accession</b>	P14151
<b>Bio-activity</b>	Not validated for activity

### Properties

<b>Purity</b>	> 90% as determined by reducing SDS-PAGE.
<b>Endotoxin</b>	< 1.0 EU/mg of the protein as determined by the LAL method
<b>Storage</b>	Generally, lyophilized proteins are stable for up to 12 months when stored at -20 to -80 °C. Reconstituted protein solution can be stored at 4-8°C for 2-7 days. Aliquots of reconstituted samples are stable at < -20°C for 3 months.
<b>Shipping</b>	This product is provided as lyophilized powder which is shipped with ice packs.
<b>Formulation</b>	Lyophilized from a 0.2 µm filtered solution in PBS with 5% Trehalose and 5% Mannitol.
<b>Reconstitution</b>	It is recommended that sterile water be added to the vial to prepare a stock solution of 0.5 mg/mL. Concentration is measured by UV-Vis.

### Data



SDS-PAGE analysis of Human SELL proteins, 2 µg/lane of Recombinant Human SELL proteins was resolved with an SDS-PAGE under reducing conditions, showing bands at 32.2KD

### Background

This gene encodes a cell surface adhesion molecule that belongs to a family of adhesion/homing receptors. The encoded protein contains a C-type lectin-like domain, a calcium-binding epidermal growth factor-like domain, and two short complement-like repeats. The gene product is required for binding and subsequent rolling of leucocytes on endothelial cells, facilitating their migration into secondary lymphoid organs and inflammation sites. Single-nucleotide polymorphisms in this gene have been associated with an various diseases including immunoglobulin A nephropathy. Alternatively spliced transcript variants have been found for this gene.

### For Research Use Only

Toll-free: 1-888-852-8623  
Web: [www.elabscience.com](http://www.elabscience.com)

Tel: 1-832-243-6086  
Email: [techsupport@elabscience.com](mailto:techsupport@elabscience.com)

Fax: 1-832-243-6017