

## FAM160B2 Polyclonal Antibody

**catalog number: E-AB-92130**

**Note:** Centrifuge before opening to ensure complete recovery of vial contents.

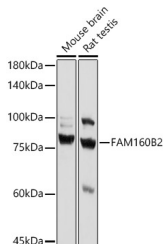
### Description

<b>Reactivity</b>	Human;Mouse;Rat
<b>Immunogen</b>	Recombinant fusion protein of mouse FAM160B2
<b>Host</b>	Rabbit
<b>Isotype</b>	IgG
<b>Purification</b>	Affinity purification
<b>Buffer</b>	Phosphate buffered solution, pH 7.4, containing 0.05% stabilizer and 50% glycerol.

### Applications

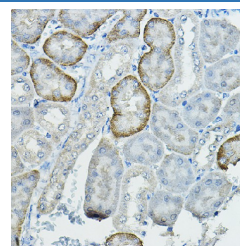
Applications	Recommended Dilution
<b>WB</b>	1:500-1:2000
<b>IHC</b>	1:50-1:200
<b>IF</b>	1:50-1:200
<b>IP</b>	1:50-1:200

### Data

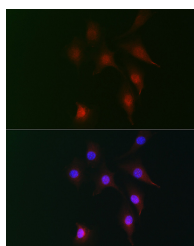


Western blot analysis of extracts of various cell lines using FAM160B2 Polyclonal Antibody at 1:1000 dilution.

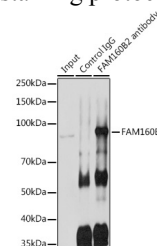
**Observed-MW:82 kDa**



Immunohistochemistry of paraffin-embedded mouse kidney using FAM160B2 Polyclonal Antibody at dilution of 1:100 (40x lens). Perform high pressure antigen retrieval with 10 mM citrate buffer pH 6.0 before commencing with IHC staining protocol.



Immunofluorescence analysis of NIH-3T3 cells using FAM160B2 Polyclonal Antibody at dilution of 1:100 (40x lens). Blue: DAPI for nuclear staining.



Immunoprecipitation analysis of 600ug extracts of Rat testis cells using 3ug FAM160B2 Polyclonal Antibody. Western blot was performed from the immunoprecipitate using FAM160B2 Polyclonal Antibody at a dilution of 1:1000.

**Observed-MW:82 kDa**

### Preparation & Storage

<b>Storage</b>	Store at -20°C Valid for 12 months. Avoid freeze / thaw cycles.
<b>Shipping</b>	The product is shipped with ice pack, upon receipt, store it immediately at the temperature recommended.

### For Research Use Only

## Background

Able to activate MAPK/ERK and TGFB signaling pathways (By similarity. May regulate the activity of genes involved in intestinal barrier function and immunoprotective inflammation. May play a role in cell proliferation (By similarity.

## For Research Use Only

Toll-free: 1-888-852-8623  
Web: [www.elabscience.com](http://www.elabscience.com)

Tel: 1-832-243-6086  
Email: [techsupport@elabscience.com](mailto:techsupport@elabscience.com)

Fax: 1-832-243-6017

Rev. V1.7