

PE/Elab Fluor® 594 Anti-Mouse CD25 Antibody[PC-61.5.3]

Catalog Number: E-AB-F1102P

Note: Centrifuge before opening to ensure complete recovery of vial contents.

Description

Reactivity	Mouse
Host	Rat
Isotype	Rat IgG1, κ
Clone No.	PC-61.5.3
Isotype Control	PE/Elab Fluor® 594 Rat IgG1, κ Isotype Control[HRPN] [Product E-AB-F09822P]
Conjugation	PE/Elab Fluor® 594
Conjugation Information	PE/Elab Fluor® 594 is designed to be excited by the blue (488 nm), Green (532 nm) and yellow-green (561 nm) lasers and detected using an optical filter centered near 620 nm (e.g., a 610/20 nm bandpass filter).
Storage Buffer	Phosphate buffered solution, pH 7.2, containing 0.09% sodium azide and 1% BSA.

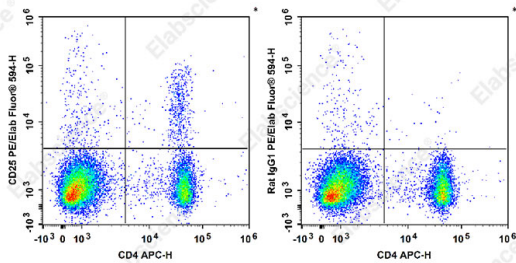
Applications

Recommended usage

FCM

Each lot of this antibody is quality control tested by flow cytometric analysis. **The amount of the reagent is suggested to be used 5 μL of antibody per test (million cells in 100 μL staining volume or per 100 μL of whole blood).** Please check your vial before the experiment. Since applications vary, the appropriate dilutions must be determined for individual use.

Data



C57BL/6 murine splenocytes are stained with APC Anti-

Mouse CD4 Antibody and PE/Elab Fluor® 594 Anti-Mouse CD25 Antibody[PC-61.5.3] (Left). Splenocytes are stained

with APC Anti-Mouse CD4 Antibody and PE/Elab Fluor® 594 Rat IgG1, κ Isotype Control (Right).

Preparation & Storage

Storage	Keep as concentrated solution. This product can be stored at 2-8°C for 12 months. Please protected from prolonged exposure to light and do not freeze.
Shipping	Ice bag

Antigen Information

Alternate Names	IL-2 receptor subunit alpha;IL-2-RA;IL-2R subunit alpha;IL2-RA;IL2RA;Interleukin-2 receptor subunit alpha;TAC antigen;p55
------------------------	---

For Research Use Only

Uniprot ID

P01590

Gene ID

16184

Background

CD25 is a 55 kD glycoprotein, also known as the low affinity IL-2R α , Ly-43, p55, or Tac. It is expressed on activated T and B cells, thymocyte subset, pre-B cells, and T regulatory cells. In association with CD122 (IL-2R β) and CD132 (common γ chain), CD25 forms the high affinity signaling IL-2 receptor.