

CCR7 Polyclonal Antibody

catalog number: E-AB-70359

Note: Centrifuge before opening to ensure complete recovery of vial contents.

Description

Reactivity	Human;Mouse;Rat
Immunogen	KLH conjugated Synthetic peptide corresponding to Mouse CCR7
Host	Rabbit
Isotype	IgG
Purification	Affinity purification
Conjugation	Unconjugated
buffer	Phosphate buffered solution, pH 7.4, containing 0.05% stabilizer, 1% protein protectant and 50% glycerol.

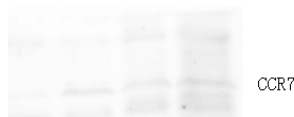
Applications

WB	1:500-1:2000
-----------	--------------

Recommended Dilution

Data

rkcat THP-1 M-thymus R-thymus

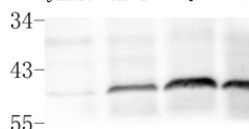


Western Blot analysis of various samples using control peptide antigen (left) and CCR7 Polyclonal Antibody at dilution of 1:800(right).

Observed-MV:48 kDa

Calculated-MV:43 kDa

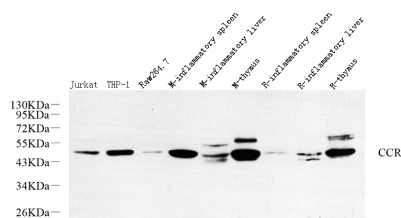
Jurkat THP-1 M-thymus R-tt



Western Blot analysis of various samples using CCR7 Polyclonal Antibody at dilution of 1:800.

Observed-MV:48 kDa

Calculated-MV:43 kDa



Preparation & Storage

Storage	Store at -20°C Valid for 12 months. Avoid freeze / thaw cycles.
Shipping	The product is shipped with ice pack,upon receipt,store it immediately at the temperature recommended.

Background

The protein encoded by this gene is a member of the G protein-coupled receptor family. This receptor was identified as a gene induced by the Epstein-Barr virus (EBV), and is thought to be a mediator of EBV effects on B lymphocytes. This receptor is expressed in various lymphoid tissues and activates B and T lymphocytes. It has been shown to control the migration of memory T cells to inflamed tissues, as well as stimulate dendritic cell maturation. The chemokine (C-C motif) ligand 19 (CCL19/ECL) has been reported to be a specific ligand of this receptor.

For Research Use Only