

## SLC1A7 Polyclonal Antibody

**catalog number:** E-AB-16060

**Note:** Centrifuge before opening to ensure complete recovery of vial contents.

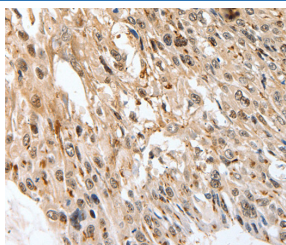
### Description

<b>Reactivity</b>	Human;Mouse
<b>Immunogen</b>	Synthetic peptide of human SLC1A7
<b>Host</b>	Rabbit
<b>Isotype</b>	IgG
<b>Purification</b>	Affinity purification
<b>Buffer</b>	Phosphate buffered solution, pH 7.4, containing 0.05% stabilizer and 50% glycerol.

### Applications

Applications	Recommended Dilution
IHC	1:50-1:200

### Data



Immunohistochemistry of paraffin-embedded Human esophagus cancer tissue using SLC1A7 Polyclonal Antibody at dilution 1:60

### Preparation & Storage

<b>Storage</b>	Store at -20°C Valid for 12 months. Avoid freeze / thaw cycles.
<b>Shipping</b>	The product is shipped with ice pack, upon receipt, store it immediately at the temperature recommended.

### Background

This gene belongs to the sodium:dicarboxylate (SDF) symporter (TC 2.A.23) family, SLC1A7 subfamily. As transporter of L-glutamate; the L-glutamate uptake is sodium- and voltage-dependent and chloride-independent. Its associated chloride conductance may participate in visual processing. It interacts with the PDZ domains of DLG4. Expressed primarily in retina. Detectable in liver, heart, muscle and brain.

### For Research Use Only