

## Recombinant Human REG3G/PAP-1B Protein (Fc Tag)

**Catalog Number:** PKSH033541

**Note:** Centrifuge before opening to ensure complete recovery of vial contents.

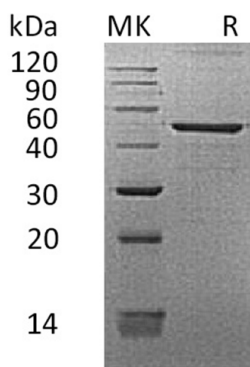
### Description

<b>Species</b>	Human
<b>Source</b>	HEK293 Cells-derived Human REG3G/PAP-1B protein Glu27-Asp175, with an C-terminal Fc
<b>Calculated MW</b>	46.5 kDa
<b>Observed MW</b>	40-50 kDa
<b>Accession</b>	Q6UW15
<b>Bio-activity</b>	Not validated for activity

### Properties

<b>Purity</b>	> 95 % as determined by reducing SDS-PAGE.
<b>Concentration</b>	Subject to label value.
<b>Endotoxin</b>	< 1.0 EU per µg of the protein as determined by the LAL method.
<b>Storage</b>	Store at < -20°C, stable for 6 months. Please minimize freeze-thaw cycles.
<b>Shipping</b>	This product is provided as liquid. It is shipped at frozen temperature with blue ice/gel packs. Upon receipt, store it immediately at < -20°C.
<b>Formulation</b>	Supplied as a 0.2 µm filtered solution of PBS, pH7.4.

### Data



> 95 % as determined by reducing SDS-PAGE.

### Background

Pancreatitis-associated protein IB; Regenerating islet-derived protein III-gamma; is a secreted protein which contains 1 C-type lectin domain. It is expressed almost exclusively in the pancreas and also expressed in testis; but not found in small intestine. This protein might be a stress protein involved in the control of bacterial proliferation.

### For Research Use Only