

Recombinant Human GGCT Protein (His Tag)

Catalog Number: PKSH033273

Note: Centrifuge before opening to ensure complete recovery of vial contents.

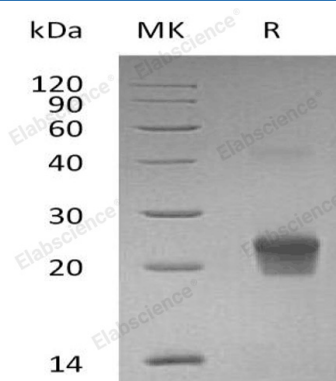
Description

Species	Human
Source	E.coli-derived Human GGCT protein Met 1-Leu188, with an N-terminal His
Calculated MW	23.2 kDa
Observed MW	24-30 kDa
Accession	O75223
Bio-activity	Not validated for activity

Properties

Purity	> 95 % as determined by reducing SDS-PAGE.
Concentration	Subject to label value.
Endotoxin	< 1.0 EU per µg of the protein as determined by the LAL method.
Storage	Store at < -20°C, stable for 6 months. Please minimize freeze-thaw cycles.
Shipping	This product is provided as liquid. It is shipped at frozen temperature with blue ice/gel packs. Upon receipt, store it immediately at < -20°C.
Formulation	Supplied as a 0.2 µm filtered solution of 20mM Tris-HCl, pH 8.0.

Data



> 95 % as determined by reducing SDS-PAGE.

Background

Human γ -Glutamylcyclotransferase belongs to the Transferases family, specifically the Aminoacyltransferase. γ -Glutamylcyclotransferase catalyzes the formation of 5-Pxoproline from γ -Glutamyl Dipeptides. It plays an important role in Glutathione Homeostasis. γ -Glutamylcyclotransferase induces the release of Cytochrome C from the mitochondria resulting in the induction of apoptosis.

For Research Use Only