

Recombinant Human PHLDA2/BWR1C Protein (His Tag)



Catalog Number:PKSH032887

Note: Centrifuge before opening to ensure complete recovery of vial contents.

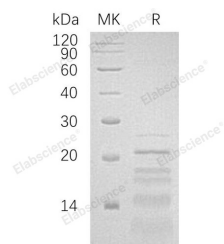
Description

Synonyms	Pleckstrin Homology-Like Domain Family A Member 2;Beckwith-Wiedemann Syndrome Chromosomal Region 1 Candidate Gene C Protein;Imprinted in Placenta and Liver Protein;Tumor-Suppressing STF cDNA 3 Protein;Tumor-Suppressing Subchromosomal Transferable Fragment Candidate Gene 3 Protein;p17-Beckwith-Wiedemann Region 1 C;p17-BWR1C;PHLDA2;BWR1C;HLDA2;IPL;TSSC3
Species	Human
Expression Host	E.coli
Sequence	Met 1-Pro152
Accession	Q53GA4
Calculated Molecular Weight	18.1 kDa
Observed molecular weight	14-25 kDa
Tag	C-His

Properties

Purity	> 90 % as determined by reducing SDS-PAGE.
Endotoxin	< 1.0 EU per µg of the protein as determined by the LAL method.
Storage	Generally, lyophilized proteins are stable for up to 12 months when stored at -20 to -80°C. Reconstituted protein solution can be stored at 4-8°C for 2-7 days. Aliquots of reconstituted samples are stable at < -20°C for 3 months.
Shipping	This product is provided as lyophilized powder which is shipped with ice packs.
Formulation	Lyophilized from a 0.2 µm filtered solution of 20mM Tris-HCl, 100mM NaCl, 1mM DTT, pH 8.0. Normally 5 % - 8 % trehalose, mannitol and 0.01% Tween80 are added as protectants before lyophilization. Please refer to the specific buffer information in
Reconstitution	Please refer to the printed manual for detailed information.

Data



> 90 % as determined by reducing SDS-PAGE.

Background

Pleckstrin Homology-Like Domain Family A Member 2 (PHLDA2) is a peripheral membrane protein that belongs to the PHLDA2 family. PHLDA2 is expressed in the placenta and adult prostate gland. In the placenta, it is present in all cells of the villous cytotrophoblast. PHLDA2 plays a role in regulating placenta growth. PHLDA2 may act via its PH domain that

For Research Use Only

A Reliable Research Partner in Life Science and Medicine

Toll-free: 1-888-852-8623

Web: www.elabscience.com

Tel: 1-832-243-6086

Email: techsupport@elabscience.com

Fax: 1-832-243-6017

Recombinant Human PHLDA2/BWR1C Protein (His Tag)



Catalog Number: PKSH032887

competes with other PH domain-containing proteins, thereby preventing their binding to membrane lipids.

For Research Use Only

A Reliable Research Partner in Life Science and Medicine

Toll-free: 1-888-852-8623

Tel: 1-832-243-6086

Fax: 1-832-243-6017

Web: www.elabscience.com

Email: techsupport@elabscience.com