

# KIRREL2 Polyclonal Antibody

catalog number: E-AB-15256

**Note:** Centrifuge before opening to ensure complete recovery of vial contents.

## Description

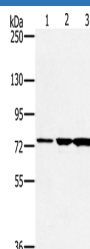
<b>Reactivity</b>	Human;Mouse
<b>Immunogen</b>	Recombinant protein of human KIRREL2
<b>Host</b>	Rabbit
<b>Isotype</b>	IgG
<b>Purification</b>	Affinity purification
<b>Conjugation</b>	Unconjugated
<b>buffer</b>	Phosphate buffered solution, pH 7.4, containing 0.05% stabilizer and 50% glycerol.

## Applications

## Recommended Dilution

<b>WB</b>	1:500-1:2000
-----------	--------------

## Data



Western Blot analysis of Human testis tissue, Jurkat cell and Mouse liver tissue using KIRREL2 Polyclonal Antibody at dilution of 1:500

**Calculated-MV:75 kDa**

## Preparation & Storage

<b>Storage</b>	Store at -20°C Valid for 12 months. Avoid freeze / thaw cycles.
<b>Shipping</b>	The product is shipped with ice pack,upon receipt,store it immediately at the temperature recommended.

## Background

KIRREL2 is a 708 amino acid protein that is a member of the immunoglobulin superfamily of cell adhesion molecules. NEPH3 consists of five extracellular Ig-like repeats, a transmembrane domain, several glycosylation sites and a cytoplasmic domain that has a stretch of nine conserved residues. NEPH3 localizes to the interpodocyte filtration slit in the kidney and to the Langerhans islet beta cells in the pancreas.

## For Research Use Only