

BGLAP Polyclonal Antibody

catalog number: E-AB-15530

Note: Centrifuge before opening to ensure complete recovery of vial contents.

Description

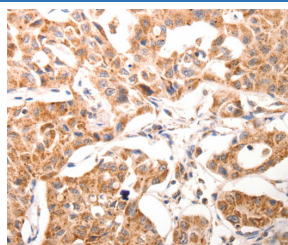
Reactivity	Human
Immunogen	Synthetic peptide of human BGLAP
Host	Rabbit
Isotype	IgG
Purification	Affinity purification
Conjugation	Unconjugated
buffer	Phosphate buffered solution, pH 7.4, containing 0.05% stabilizer and 50% glycerol.

Applications

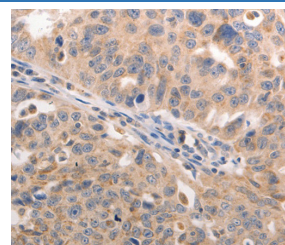
Recommended Dilution

IHC	1:50-1:200
------------	------------

Data



Immunohistochemistry of paraffin-embedded Human ovarian cancer tissue using BGLAP Polyclonal Antibody at dilution of 1:60



Immunohistochemistry of paraffin-embedded Human lung cancer using BGLAP Polyclonal Antibody at dilution of 1:60

Preparation & Storage

Storage	Store at -20°C Valid for 12 months. Avoid freeze / thaw cycles.
Shipping	The product is shipped with ice pack, upon receipt, store it immediately at the temperature recommended.

Background

This gene belongs to the osteocalcin/matrix Gla protein family. The protein is a part of the bone protein. It binds strongly to apatite and calcium. BGLAP obtain peak expression at the day of 21 during osteogenesis.

For Research Use Only