

(KO Validated) ADRBK1 Polyclonal Antibody

catalog number: E-AB-60399

Note: Centrifuge before opening to ensure complete recovery of vial contents.

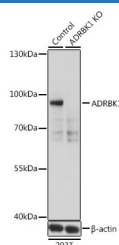
Description

Reactivity	Human;Mouse;Rat
Immunogen	Recombinant fusion protein of human ADRBK1 (NP_001610.2).
Host	Rabbit
Isotype	IgG
Purification	Affinity purification
Buffer	Phosphate buffered solution, pH 7.4, containing 0.05% stabilizer and 50% glycerol.

Applications Recommended Dilution

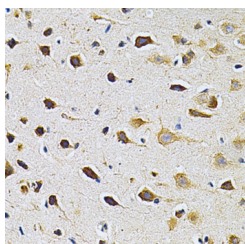
WB	1:500-1:2000
IHC	1:50-1:200

Data

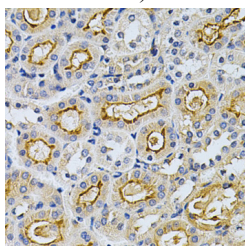


Western blot analysis of extracts from normal (control) and ADRBK1 knockout (KO) 293T cells using ADRBK1 Polyclonal Antibody at dilution of 1:500.

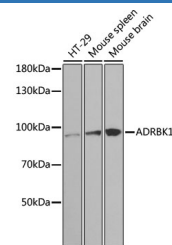
Observed-MV:80 kDa
Calculated-MV:79 kDa



Immunohistochemistry of paraffin-embedded Rat brain using ADRBK1 Polyclonal Antibody at dilution of 1:200 (40x lens).

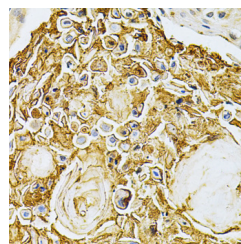


Immunohistochemistry of paraffin-embedded Mouse kidney using ADRBK1 Polyclonal Antibody at dilution of 1:200 (40x lens).



Western blot analysis of extracts of various cell lines using ADRBK1 Polyclonal Antibody at dilution of 1:1000.

Observed-MV:80 kDa
Calculated-MV:79 kDa



Immunohistochemistry of paraffin-embedded Human esophageal cancer using ADRBK1 Polyclonal Antibody at dilution of 1:200 (40x lens).

For Research Use Only

Preparation & Storage

Storage

Store at -20°C Valid for 12 months. Avoid freeze / thaw cycles.

Shipping

The product is shipped with ice pack, upon receipt, store it immediately at the temperature recommended.

Background

The product of this gene phosphorylates the beta-2-adrenergic receptor and appears to mediate agonist-specific desensitization observed at high agonist concentrations. This protein is an ubiquitous cytosolic enzyme that specifically phosphorylates the activated form of the beta-adrenergic and related G-protein-coupled receptors. Abnormal coupling of beta-adrenergic receptor to G protein is involved in the pathogenesis of the failing heart.

For Research Use Only