

## Recombinant Human Follitropin Subunit $\beta$ /FSHB Protein (His Tag)

Catalog Number: PKSH032456

**Note:** Centrifuge before opening to ensure complete recovery of vial contents.

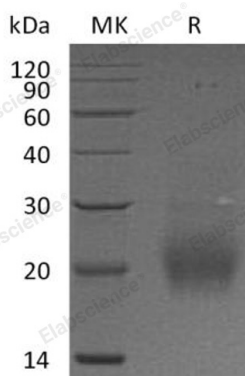
### Description

Species	Human
Source	HEK293 Cells-derived Human Follitropin Subunit $\beta$ /FSHB protein Asn19-Glu129, with an C-terminal His
Calculated MW	13.5 kDa
Observed MW	21 kDa
Accession	P01225
Bio-activity	Not validated for activity

### Properties

Purity	> 90 % as determined by reducing SDS-PAGE.
Endotoxin	< 1.0 EU per $\mu$ g of the protein as determined by the LAL method.
Storage	Generally, lyophilized proteins are stable for up to 12 months when stored at -20 to -80 °C. Reconstituted protein solution can be stored at 4-8°C for 2-7 days. Aliquots of reconstituted samples are stable at < -20°C for 3 months.
Shipping	This product is provided as lyophilized powder which is shipped with ice packs.
Formulation	Lyophilized from a 0.2 $\mu$ m filtered solution of PBS, pH 7.4. Normally 5% - 8% trehalose, mannitol and 0.01% Tween 80 are added as protectants before lyophilization. Please refer to the specific buffer information in the printed manual.
Reconstitution	Please refer to the printed manual for detailed information.

### Data



> 90 % as determined by reducing SDS-PAGE.

### Background

Follitropin Subunit  $\beta$  (FSHB) is a secreted protein that belongs to the glycoprotein hormones subunit  $\beta$  family. The pituitary glycoprotein hormone family includes follicle-stimulating hormone, luteinizing hormone, chorionic gonadotropin, and thyroid-stimulating hormone. FSHB exists in a heterodimer of a common  $\alpha$  chain and an unique  $\beta$  chain that confers biological specificity to thyrotropin, lutropin, follitropin, and gonadotropin. FSHB stimulates development of follicle and spermatogenesis in the reproductive organs. Defects in FSHB are a cause of isolated follicle-stimulating hormone deficiency (IFSHD).

### For Research Use Only