

## FITC Anti-Human TCR Vβ7.1 Antibody[ZOE5.1]

Catalog Number: AN00370C

Note: Centrifuge before opening to ensure complete recovery of vial contents.

### Description

Reactivity	Human
Host	Mouse
Isotype	Mouse IgG2a, κ
Clone No.	ZOE5.1
Isotype Control	FITC Mouse IgG2a, κ Isotype Control[C1.18.4] [Product E-AB-F09802C]
Conjugation	FITC
Conjugation Information	FITC is designed to be excited by the Blue laser (488 nm) and detected using an optical filter centered near 530 nm (e.g., a 525/40 nm bandpass filter).
Storage Buffer	Phosphate buffered solution, pH 7.2, containing 0.09% sodium azide and 1% BSA.

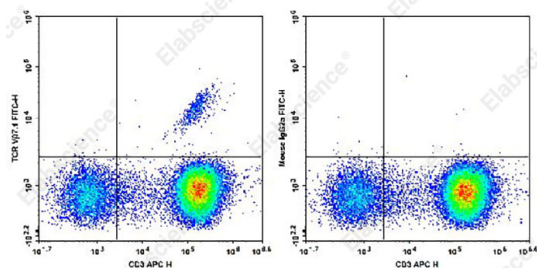
### Applications

### Recommended usage

#### FCM

Each lot of this antibody is quality control tested by flow cytometric analysis. **The amount of the reagent is suggested to be used 5 μL of antibody per test (million cells in 100 μL staining volume or per 100 μL of whole blood).** Please check your vial before the experiment. Since applications vary, the appropriate dilutions must be determined for individual use.

### Data



Staining of normal human peripheral blood cells with APC Anti-Human CD3 Antibody and FITC Anti-Human TCR Vβ7.1 Antibody[ZOE5.1] (left) or FITC Mouse IgG2a, κ Isotype Control (right). Cells in the lymphocytes gate were used for analysis.

### Preparation & Storage

Storage	Keep as concentrated solution. This product can be stored at 2-8°C for 12 months. Please protected from prolonged exposure to light and do not freeze.
Shipping	Ice bag

### Antigen Information

Alternate Names	TCR Vb7.1;TCR V beta 7.1;TCRBV7S1;ZOE
Background	The Vβ7.1 TCR is a variant of the TCR β chain. It belongs to the Ig superfamily and is expressed by a subset of peripheral blood T cells and some T cell clones.

### For Research Use Only

