

STK4 Polyclonal Antibody

Catalog Number:E-AB-16302



Note: Centrifuge before opening to ensure complete recovery of vial contents.

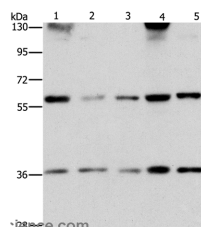
Description

Reactivity	Human,Mouse
Immunogen	Synthetic peptide of human STK3/STK4
Host	Rabbit
Isotype	IgG
Purification	Affinity purification
Conjugation	Unconjugated
Formulation	PBS with 0.05% sodium azide and 50% glycerol, PH7.4

Applications Recommended Dilution

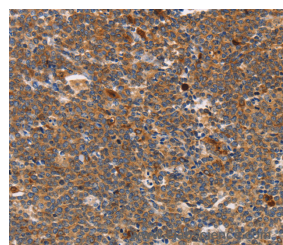
WB	1:500-1:2000
IHC	1:100-1:300

Data

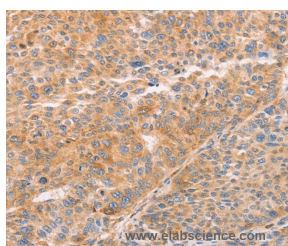


Western Blot analysis of PC3 and heLa cell, Human bladder carcinoma tissue and A172 cell, hepG2 cell using STK4 Polyclonal Antibody at dilution of 1:1000

Calculated Mw:56kDa



Immunohistochemistry of paraffin-embedded Human Lymphoma using STK4 Polyclonal Antibody at dilution of 1:70



Immunohistochemistry of paraffin-embedded Human liver cancer using STK4 Polyclonal Antibody at dilution of 1:70

Preparation & Storage

Storage Store at -20°C. Avoid freeze / thaw cycles.

Background

Sterile-20 (Ste20) is a serine/threonine kinase in *Saccharomyces cerevisiae* that is involved in relaying signals from G protein-coupled receptors to cyto-solic MAP kinase cascades. Mammalian protein kinases that display sequence similarity

For Research Use Only

A Reliable Research Partner in Life Science and Medicine

Toll-free: 1-888-852-8623

Web: www.elabscience.com

Tel: 1-832-243-6086

Email: techsupport@elabscience.com

Fax: 1-832-243-6017

STK4 Polyclonal Antibody

Catalog Number: E-AB-16302



to Ste20 are divided into two groups, the PAK subfamily and the GCK subfamily. The mammalian Ste20-like kinases (MST kinases), also known as Krs proteins, are members of the GCK subfamily. Ksr-1 (MST-2) and Ksr-2 (MST-1) are both direct substrates of caspase-3 that accelerate caspase-3 activation.

For Research Use Only

A Reliable Research Partner in Life Science and Medicine

Toll-free: 1-888-852-8623

Web: www.elabscience.com

Tel: 1-832-243-6086

Email: techsupport@elabscience.com

Fax: 1-832-243-6017