

IQGAP2 Polyclonal Antibody

Catalog Number:E-AB-17344



Note: Centrifuge before opening to ensure complete recovery of vial contents.

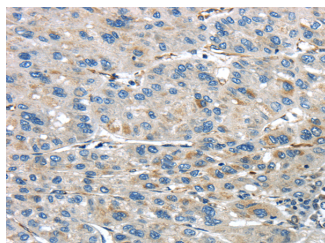
Description

Reactivity	Human,Mouse
Immunogen	Synthetic peptide of human IQGAP2
Host	Rabbit
Isotype	IgG
Purification	Affinity purification
Conjugation	Unconjugated
Formulation	PBS with 0.05% sodium azide and 50% glycerol, PH7.4

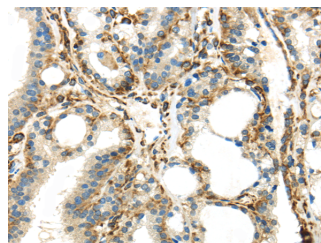
Applications Recommended Dilution

IHC	1:30-150
ELISA	1:1000-2000

Data



Immunohistochemistry of paraffin-embedded Human liver cancer using IQGAP2 Polyclonal Antibody at dilution of 1/45
Calculated Mw:181 kDa



Immunohistochemistry of paraffin-embedded Human thyroid cancer using IQGAP2 Polyclonal Antibody at dilution of 1/45

Preparation & Storage

Storage Store at -20°C. Avoid freeze / thaw cycles.

Background

This gene encodes a member of the IQGAP family. The protein contains three IQ domains, one calponin homology domain, one Ras-GAP domain and one WW domain. It interacts with components of the cytoskeleton, with cell adhesion molecules, and with several signaling molecules to regulate cell morphology and motility.

For Research Use Only

A Reliable Research Partner in Life Science and Medicine

Toll-free: 1-888-852-8623

Web: www.elabscience.com

Tel: 1-832-243-6086

Email: techsupport@elabscience.com

Fax: 1-832-243-6017