

## Purified Anti-Human CLEC-2 Antibody[AYP1]

catalog number: AN008900P

**Note:** Centrifuge before opening to ensure complete recovery of vial contents.

### Description

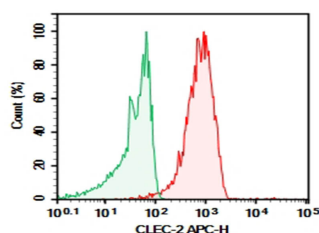
<b>Reactivity</b>	Human
<b>Immunogen</b>	Recombinant Human CLEC-2 protein
<b>Host</b>	Mouse
<b>Isotype</b>	Mouse IgG1, $\kappa$
<b>Clone</b>	AYP1
<b>Purification</b>	>98%, Protein A/G purified
<b>Buffer</b>	Phosphate-buffered solution, pH 7.2, containing 0.05% non-protein stabilizer. Dialyze to completely remove the stabilizer prior to labeling.

### Applications

### Recommended Dilution

<b>FCM</b>	2 $\mu\text{g/mL}$ ( $0.5 \times 10^6$ - $1 \times 10^6$ cells)
------------	---

### Data



Verified Samples in FCM: Human peripheral blood platelet cell

### Preparation & Storage

<b>Storage</b>	Store at 4°C valid for 12 months or -20°C valid for long term storage, avoid freeze / thaw cycles.
<b>Shipping</b>	Ice bag

### Background

C-type lectin domain family 1 member B (CLEC1B, CLEC2) is a 32kD, type II transmembrane protein, highly expressed on platelets and megakaryocytes. CLEC1B is involved in platelet activation and aggregation, and mediates the capture of HIV-1 by platelets. CLEC1B contains one hem-immunoreceptor tyrosine-based activation motif (hemITAM) through which interact with Syk and PLC-g. The known ligands of CLEC1B are rhodocytin and podoplanin.

### For Research Use Only