

## Recombinant Human TUBB4A Protein (His Tag)

**Catalog Number: PKSH033158**

**Note:** Centrifuge before opening to ensure complete recovery of vial contents.

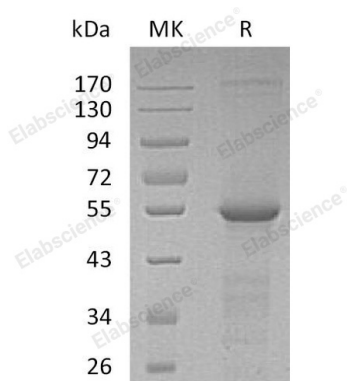
### Description

<b>Species</b>	Human
<b>Source</b>	E.coli-derived Human TUBB4A protein Met 1-Ala444, with an N-terminal His
<b>Calculated MW</b>	51.7 kDa
<b>Observed MW</b>	58 kDa
<b>Accession</b>	P04350
<b>Bio-activity</b>	Not validated for activity

### Properties

<b>Purity</b>	> 90 % as determined by reducing SDS-PAGE.
<b>Endotoxin</b>	< 1.0 EU per µg of the protein as determined by the LAL method.
<b>Storage</b>	Generally, lyophilized proteins are stable for up to 12 months when stored at -20 to -80 °C. Reconstituted protein solution can be stored at 4-8°C for 2-7 days. Aliquots of reconstituted samples are stable at < -20°C for 3 months.
<b>Shipping</b>	This product is provided as lyophilized powder which is shipped with ice packs.
<b>Formulation</b>	Lyophilized from a 0.2 µm filtered solution of 20mM Histidine-HCl, 10% Trehalose, 100mM NaCl, 0.05% Tween 80, pH6.5. Normally 5% - 8% trehalose, mannitol and 0.01% Tween 80 are added as protectants before lyophilization. Please refer to the specific buffer information in the printed manual.
<b>Reconstitution</b>	Please refer to the printed manual for detailed information.

### Data



> 90 % as determined by reducing SDS-PAGE.

### Background

Tubulin Beta-4A Chain (TUBB4A) is a cytoplasmic peptide containing 444 amino acids. TUBB4A is a member of the Tubulin family. Tubulin is the major constituent of microtubules. Tubulin is a dimer composed of one alpha and one beta tubulin molecule; there are many forms of beta tubulins, Beta II and Beta IV Tubulin are ubiquitously expressed. Beta-III Tubulin, also known as Tubulin Beta-4, is regarded as a neuron-specific marker. It binds two moles of GTP, one at an exchangeable site on the beta chain and one at a non-exchangeable site on the alpha-chain.

### For Research Use Only