

Note: Centrifuge before opening to ensure complete recovery of vial contents.

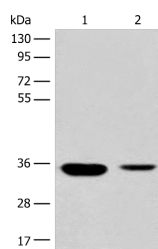
Description

| | |
|---------------------|--|
| Reactivity | Human, Mouse, Rat |
| Immunogen | Synthetic peptide of human RGN |
| Host | Rabbit |
| Isotype | IgG |
| Purification | Antigen affinity purification |
| Conjugation | Unconjugated |
| Formulation | PBS with 0.05% NaN ₃ and 40% Glycerol,pH7.4 |

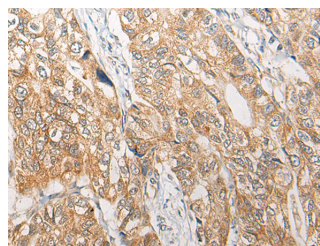
Applications Recommended Dilution

| | |
|--------------|----------------|
| WB | 1:500-1:2000 |
| IHC | 1:25-1:100 |
| ELISA | 1:5000-1:10000 |

Data



Western blot analysis of Mouse liver tissue and Human fetal liver tissue lysates using RGN Polyclonal Antibody at dilution of 1:500
Observed MW:Refer to figures
Calculated Mw:33 kDa



Immunohistochemistry of paraffin-embedded Human gastric cancer tissue using RGN Polyclonal Antibody at dilution of 1:25(×200)

Preparation & Storage

Storage Store at -20°C. Avoid freeze / thaw cycles.

Background

The protein encoded by this gene is a highly conserved, calcium-binding protein, that is preferentially expressed in the liver and kidney. It may have an important role in calcium homeostasis. Studies in rat indicate that this protein may also play a role in aging, as it shows age-associated down-regulation. This gene is part of a gene cluster on chromosome Xp11.3-Xp11.23. Alternative splicing results in multiple transcript variants.

For Research Use Only

A Reliable Research Partner in Life Science and Medicine

Toll-free: 1-888-852-8623

Web: www.elabscience.com

Tel: 1-832-243-6086

Email: techsupport@elabscience.com

Fax: 1-832-243-6017