

SMAD3 Polyclonal Antibody

Catalog Number: E-AB-13066



Note: Centrifuge before opening to ensure complete recovery of vial contents.

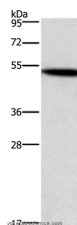
Description

Reactivity	Human, Mouse, Rat
Immunogen	Synthetic peptide of human SMAD3
Host	Rabbit
Isotype	IgG
Purification	Affinity purification
Conjugation	Unconjugated
Formulation	PBS with 0.05% sodium azide and 50% glycerol, PH7.4

Applications Recommended Dilution

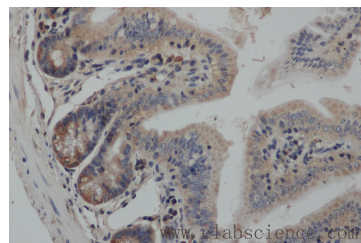
WB	1:500-1:2000
IHC	1:25-1:100

Data

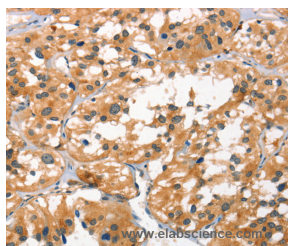


Western Blot analysis of Human kidney cancer tissue using SMAD3 Polyclonal Antibody at dilution of 1:400

Calculated Mw: 48kDa



Immunohistochemistry of paraffin-embedded Mouse colon using SMAD3 Polyclonal Antibody at dilution of 1:50



Immunohistochemistry of paraffin-embedded Human thyroid cancer using SMAD3 Polyclonal Antibody at dilution of 1:25

Preparation & Storage

Storage Store at -20°C. Avoid freeze / thaw cycles.

Background

The protein encoded by this gene belongs to the SMAD, a family of proteins similar to the gene products of the Drosophila gene 'mothers against decapentaplegic' (Mad) and the C. elegans gene Sma. SMAD proteins are signal transducers and transcriptional modulators that mediate multiple signaling pathways. This protein functions as a

For Research Use Only

A Reliable Research Partner in Life Science and Medicine

Toll-free: 1-888-852-8623

Web: www.elabscience.com

Tel: 1-832-243-6086

Email: techsupport@elabscience.com

Fax: 1-832-243-6017

SMAD3 Polyclonal Antibody

Catalog Number: E-AB-13066



transcriptional modulator activated by transforming growth factor-beta and is thought to play a role in the regulation of carcinogenesis.

For Research Use Only

A Reliable Research Partner in Life Science and Medicine

Toll-free: 1-888-852-8623

Tel: 1-832-243-6086

Fax: 1-832-243-6017

Web: www.elabscience.com

Email: techsupport@elabscience.com