

## TUBD1 Polyclonal Antibody

catalog number: E-AB-19020

**Note:** Centrifuge before opening to ensure complete recovery of vial contents.

### Description

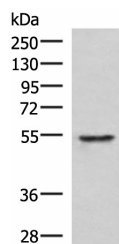
<b>Reactivity</b>	Human;Mouse
<b>Immunogen</b>	Fusion protein of human TUBD1
<b>Host</b>	Rabbit
<b>Isotype</b>	IgG
<b>Purification</b>	Antigen affinity purification
<b>Conjugation</b>	Unconjugated
<b>Buffer</b>	Phosphate buffered solution, pH 7.4, containing 0.05% stabilizer and 50% glycerol.

### Applications

### Recommended Dilution

<b>WB</b>	1:1000-1:5000
<b>IHC</b>	1:50-1:300

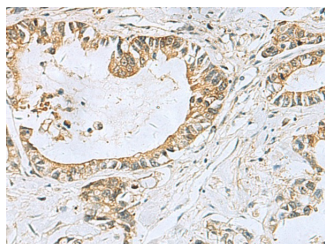
### Data



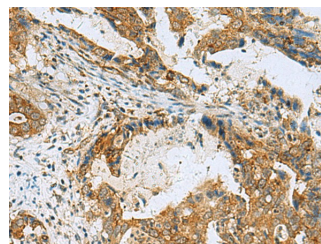
Western blot analysis of Jurkat cell lysate using TUBD1 Polyclonal Antibody at dilution of 1:1000

**Observed-MW:Refer to figures**

**Calculated-MW:51 kDa**



Immunohistochemistry of paraffin-embedded Human gastric cancer tissue using TUBD1 Polyclonal Antibody at dilution of 1:70(×200)



Immunohistochemistry of paraffin-embedded Human cervical cancer tissue using TUBD1 Polyclonal Antibody at dilution of 1:70(×200)

### Preparation & Storage

<b>Storage</b>	Store at -20°C Valid for 12 months. Avoid freeze / thaw cycles.
<b>Shipping</b>	The product is shipped with ice pack, upon receipt, store it immediately at the temperature recommended.

### Background

In the elongating spermatid it is associated with the manchette, a specialized microtubule system present during reshaping of the sperm head.

### For Research Use Only