

# Recombinant Human GALK2 Protein (His Tag)

Catalog Number:PKSH032777



**Note:** Centrifuge before opening to ensure complete recovery of vial contents.

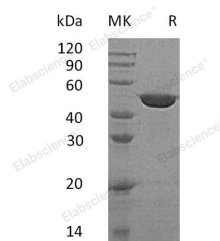
## Description

<b>Synonyms</b>	N-acetylgalactosamine kinase;GalNAc kinase;Galactokinase 2;GALK2 and GK2
<b>Species</b>	Human
<b>Expression Host</b>	HEK293 Cells
<b>Sequence</b>	Met 1-Ala458
<b>Accession</b>	Q01415
<b>Calculated Molecular Weight</b>	51.4 kDa
<b>Observed molecular weight</b>	47 kDa
<b>Tag</b>	C-His

## Properties

<b>Purity</b>	> 95 % as determined by reducing SDS-PAGE.
<b>Endotoxin</b>	< 1.0 EU per µg of the protein as determined by the LAL method.
<b>Storage</b>	Store at < -20°C, stable for 6 months. Please minimize freeze-thaw cycles.
<b>Shipping</b>	This product is provided as liquid. It is shipped at frozen temperature with blue ice/gel packs. Upon receipt, store it immediately at < - 20°C.
<b>Formulation</b>	Supplied as a 0.2 µm filtered solution of 25mM Tris-HCl, 100mM glycine, 10% glycerol, pH 7.3.
<b>Reconstitution</b>	Not Applicable

## Data



> 95 % as determined by reducing SDS-PAGE.

## Background

GALK2 acts as a galactokinase when galactose is present at high concentrations. GALK2 may be involved in a salvage pathway for the reutilization of free GalNAc derived from the degradation of complex carbohydrates. GALK2 has been reported to participate in pathways , such as Amino sugar and nucleotide sugar metabolism, Galactose metabolism and Metabolic pathways.

## For Research Use Only

A Reliable Research Partner in Life Science and Medicine

Toll-free: 1-888-852-8623

Web: [www.elabscience.com](http://www.elabscience.com)

Tel: 1-832-243-6086

Email: [techsupport@elabscience.com](mailto:techsupport@elabscience.com)

Fax: 1-832-243-6017