

APC Anti-Mouse CD45.1 Antibody[A20]

Catalog Number: E-AB-F1184E

Note: Centrifuge before opening to ensure complete recovery of vial contents.

Description

Reactivity	Mouse
Host	Mouse
Isotype	Mouse IgG2a, κ
Clone No.	A20
Isotype Control	APC Mouse IgG2a, κ Isotype Control[C1.18.4] [Product E-AB-F09802E]
Conjugation	APC
Conjugation Information	APC is designed to be excited by the Red (627-640 nm) laser and detected using an optical filter centered near 660 nm (e.g., a 660/20 nm bandpass filter).
Storage Buffer	Phosphate buffered solution, pH 7.2, containing 0.09% sodium azide and 1% BSA.

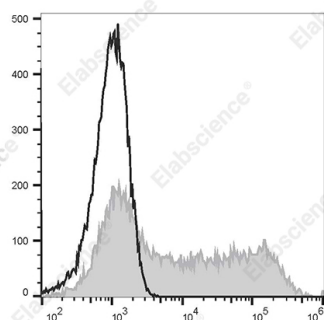
Applications

Recommended usage

FCM

Each lot of this antibody is quality control tested by flow cytometric analysis. **The amount of the reagent is suggested to be used 5 μL of antibody per test (million cells in 100 μL staining volume or per 100 μL of whole blood).** Please check your vial before the experiment. Since applications vary, the appropriate dilutions must be determined for individual use.

Data



CHO cells transiently transfected with pcDNA3.1 plasmid encoding Mouse CD45.1 gene are stained with APC Anti-Mouse CD45.1 Antibody[A20] (filled gray histogram) or APC Mouse IgG2a, κ Isotype Control (empty black histogram).

Preparation & Storage

Storage	Keep as concentrated solution. This product can be stored at 2-8°C for 12 months. Please protected from prolonged exposure to light and do not freeze.
Shipping	Ice bag

Antigen Information

Alternate Names	CD45;L-CA;Ly-5;Ptprc;T200
Gene ID	19264

For Research Use Only

Background

CD45.1 is an alloantigen of CD45, expressed by Ly5.1 bearing mouse strains (e.g., RII I, SJL/J, STS/A, DA). CD45, a member of the protein tyrosine phosphatase (PTP) family, is a 180-240 kD glycoprotein expressed on all hematopoietic cells except mature erythrocytes and platelets. There are multiple isoforms in mice that play key roles in TCR and BCR signal transduction. These isoforms are very specific to the activation and maturation states of the cell as well as specific cell types. The primary ligands for CD45 are galectin-1, CD2, CD3, CD4, TCR, CD22, and Thy-1.