

## NAB1 Polyclonal Antibody

catalog number: **E-AB-66537**

**Note:** Centrifuge before opening to ensure complete recovery of vial contents.

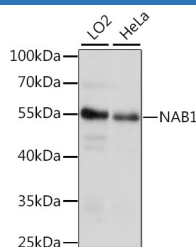
### Description

<b>Reactivity</b>	Human
<b>Immunogen</b>	Recombinant fusion protein of human NAB1 (NP_005957.2).
<b>Host</b>	Rabbit
<b>Isotype</b>	IgG
<b>Purification</b>	Affinity purification
<b>Buffer</b>	Phosphate buffered solution, pH 7.4, containing 0.05% stabilizer and 50% glycerol.

### Applications

<b>WB</b>	1:500-1:2000
-----------	--------------

### Data



Western blot analysis of extracts of various cell lines using NAB1 Polyclonal Antibody at dilution of 1:1000.

**Observed-MV:54 kDa**

**Calculated-MV:51 kDa/54 kDa**

### Preparation & Storage

<b>Storage</b>	Store at -20°C Valid for 12 months. Avoid freeze / thaw cycles.
<b>Shipping</b>	The product is shipped with ice pack, upon receipt, store it immediately at the temperature recommended.

### Background

NAB1 (NGFI-A Binding Protein 1) is a Protein Coding gene. Diseases associated with NAB1 include Neuropathy, Congenital Hypomyelinating, 1, Autosomal Recessive and Hypertrophic Neuropathy Of Dejerine-Sottas. Among its related pathways are Integrated Breast Cancer Pathway. Gene Ontology (GO) annotations related to this gene include transcription factor binding. An important paralog of this gene is NAB2.

### For Research Use Only