

SERPINB5 Polyclonal Antibody

catalog number: E-AB-14208

Note: Centrifuge before opening to ensure complete recovery of vial contents.

Description

Reactivity	Human;Mouse
Immunogen	Recombinant protein of human SERPINB5
Host	Rabbit
Isotype	IgG
Purification	Affinity purification
Buffer	Phosphate buffered solution, pH 7.4, containing 0.05% stabilizer and 50% glycerol.

Applications

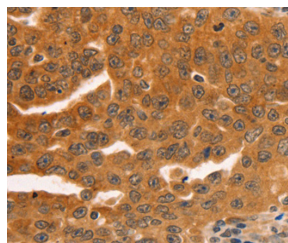
Applications	Recommended Dilution
WB	1:500-1:2000
IHC	1:100-1:300

Data

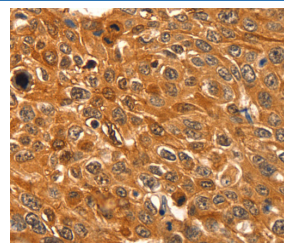


Western Blot analysis of Mouse lung tissue using SERPINB5 Polyclonal Antibody at dilution of 1:1000

Calculated-MW:42 kDa



Immunohistochemistry of paraffin-embedded Human ovarian cancer using SERPINB5 Polyclonal Antibody at dilution of 1:60



Immunohistochemistry of paraffin-embedded Human esophagus cancer using SERPINB5 Polyclonal Antibody at dilution of 1:60

Preparation & Storage

Storage	Store at -20°C Valid for 12 months. Avoid freeze / thaw cycles.
Shipping	The product is shipped with ice pack, upon receipt, store it immediately at the temperature recommended.

Background

For Research Use Only

Maspin (mammary serine protease inhibitor) also known as serpin B5 is a protein that in humans is encoded by the SERPINB5 gene.[1] This protein belongs to the serpin (serine protease inhibitor) superfamily.[1] SERPINB5 also functions as a tumor suppressor gene in epithelial cells. The expressed protein suppresses the ability of cancer cells to invade and metastasize other tissues. The protein also functions as an angiogenesis inhibitor. It blocks the growth, invasion, and metastatic properties of mammary tumors. As it does not undergo the S (stressed) to R (relaxed) conformational transition characteristic of active serpins, it exhibits no serine protease inhibitory activity.

For Research Use Only

Toll-free: 1-888-852-8623
Web: www.elabscience.com

Tel: 1-832-243-6086
Email: techsupport@elabscience.com

Fax: 1-832-243-6017

Rev. V1.7