

CHST3 Polyclonal Antibody

Catalog Number: E-AB-19704



Note: Centrifuge before opening to ensure complete recovery of vial contents.

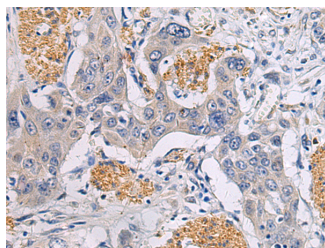
Description

Reactivity	Human, Mouse, Rat
Immunogen	Synthetic peptide of human CHST3
Host	Rabbit
Isotype	IgG
Purification	Antigen affinity purification
Conjugation	Unconjugated
Formulation	PBS with 0.05% NaN ₃ and 40% Glycerol, pH7.4

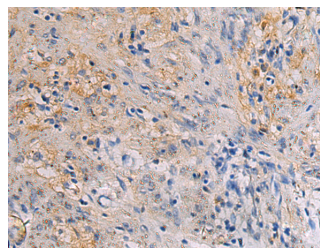
Applications Recommended Dilution

IHC	1:50-1:100
ELISA	1:5000-1:10000

Data



Immunohistochemistry of paraffin-embedded Human esophagus cancer tissue using CHST3 Polyclonal Antibody at dilution of 1:30 (x200)



Immunohistochemistry of paraffin-embedded Human gastric cancer tissue using CHST3 Polyclonal Antibody at dilution of 1:30 (x200)

Preparation & Storage

Storage Store at -20°C. Avoid freeze / thaw cycles.

Background

This gene encodes an enzyme which catalyzes the sulfation of chondroitin, a proteoglycan found in the extracellular matrix and most cells which is involved in cell migration and differentiation. Mutations in this gene are associated with spondylepiphyseal dysplasia and humerospinal dysostosis.

For Research Use Only

A Reliable Research Partner in Life Science and Medicine

Toll-free: 1-888-852-8623

Web: www.elabscience.com

Tel: 1-832-243-6086

Email: techsupport@elabscience.com

Fax: 1-832-243-6017