

ATG7 Polyclonal Antibody

Catalog Number: E-AB-70287



Note: Centrifuge before opening to ensure complete recovery of vial contents.

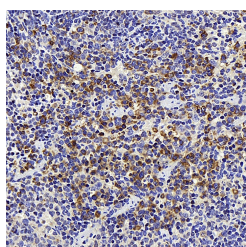
Description

Reactivity	Mouse
Immunogen	KLH conjugated Synthetic peptide corresponding to mouse ATG7
Host	Rabbit
Isotype	IgG
Purification	Affinity purification
Conjugation	Unconjugated
Formulation	PBS with 0.02% sodium azide, 1% protective protein and 50% glycerol, pH7.4

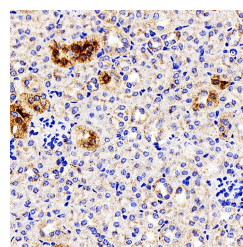
Applications Recommended Dilution

IHC	1:300-1:1000
------------	--------------

Data



Immunohistochemistry analysis of paraffin-embedded mouse spleen using ATG7 Polyclonal Antibody at dilution of 1:300.



Immunohistochemistry analysis of paraffin-embedded mouse kidney using ATG7 Polyclonal Antibody at dilution of 1:300.

Preparation & Storage

Storage Store at -20°C. Avoid freeze / thaw cycles.

Background

ATG7 (Autophagy Related 7) is a Protein Coding gene. Among its related pathways are Autophagy Pathway and Innate Immune System. GO annotations related to this gene include protein homodimerization activity and ubiquitin activating enzyme activity. This gene encodes an E1-like activating enzyme that is essential for autophagy and cytoplasmic to vacuole transport. The encoded protein is also thought to modulate p53-dependent cell cycle pathways during prolonged metabolic stress. It has been associated with multiple functions, including axon membrane trafficking, axonal homeostasis, mitophagy, adipose differentiation, and hematopoietic stem cell maintenance. Alternative splicing results in multiple transcript variants.

For Research Use Only

A Reliable Research Partner in Life Science and Medicine

Toll-free: 1-888-852-8623

Web: www.elabscience.com

Tel: 1-832-243-6086

Email: techsupport@elabscience.com

Fax: 1-832-243-6017