

LRPAP1 Monoclonal Antibody

catalog number: AN200203P

Note: *Centrifuge before opening to ensure complete recovery of vial contents.*

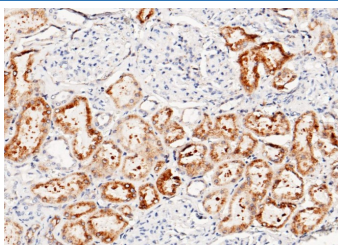
Description

Reactivity	Human
Immunogen	Recombinant Human LRPAP1 protein
Host	Mouse
Isotype	IgG1
Clone	6H10
Purification	Protein A
Buffer	0.2 µm filtered solution in PBS

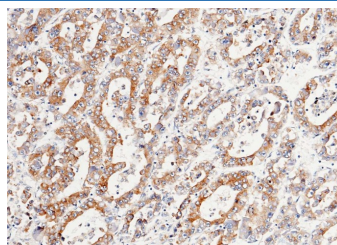
Applications Recommended Dilution

IHC-P	1:100-1:500
--------------	-------------

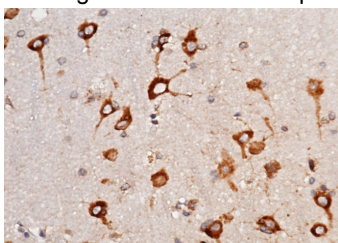
Data



Immunohistochemistry of paraffin-embedded human kidney using LRPAP1 Monoclonal Antibody at dilution of 1:200. Positive staining was localized to nephric tubule.



Immunohistochemistry of paraffin-embedded human hepatoma using LRPAP1 Monoclonal Antibody at dilution of 1:200.



Immunohistochemistry of paraffin-embedded human brain using LRPAP1 Monoclonal Antibody at dilution of 1:200.

Preparation & Storage

Storage	This antibody can be stored at 2°C-8°C for one month without detectable loss of activity. Antibody products are stable for twelve months from date of receipt when stored at -20°C to -80°C. Preservative-Free. Avoid repeated freeze-thaw cycles.
Shipping	Ice bag

Background

This gene encodes a protein that interacts with the low density lipoprotein (LDL) receptor-related protein and facilitates its proper folding and localization by preventing the binding of ligands. Mutations in this gene have been identified in individuals with myopia 23. Alternative splicing results in multiple transcript variants.

For Research Use Only

Toll-free: 1-888-852-8623
Web: www.elabscience.com

Tel: 1-832-243-6086
Email: techsupport@elabscience.com

Fax: 1-832-243-6017

Rev. V1.0