

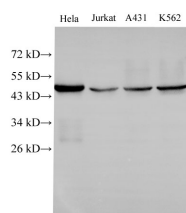
## CK-18 Polyclonal Antibody

catalog number: D-AB-10166L

**Note:** Centrifuge before opening to ensure complete recovery of vial contents.

Description	
Reactivity	Human;Mouse;Rat
Immunogen	Recombinant Human Keratin, type I cytoskeletal 18 protein
Host	Rabbit
Isotype	IgG
Purification	Antigen Affinity Purification
Conjugation	Unconjugated
Buffer	PBS with 0.05% Proclin300, 1% protective protein and 50% glycerol, pH7.4
Applications	Recommended Dilution
WB	1:500-1:1000
IHC	1:500-1:1000
IF	1:100-1:200

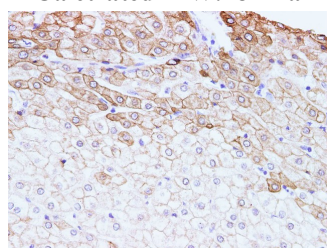
## Data



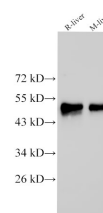
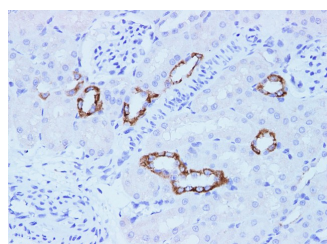
Western Blot analysis of Hela, Jurkat, A431 and k562 cells using CK-18 Polyclonal Antibody at dilution of 1:500

**Observed-MW:48 kDa**

**Calculated-MW:48 kDa**



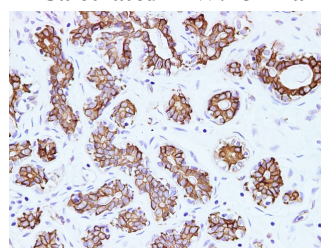
Immunohistochemistry of paraffin-embedded Human liver using CK-18 Polyclonal Antibody at dilution of 1:100



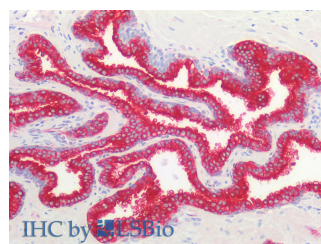
Western Blot analysis of Rat liver and Mouse liver using CK-18 Polyclonal Antibody at dilution of 1:500

**Observed-MW:48 kDa**

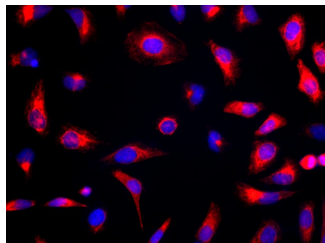
**Calculated-MW:48 kDa**



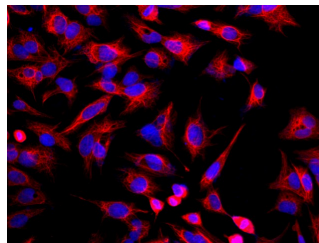
Immunohistochemistry of paraffin-embedded Human breast using CK-18 Polyclonal Antibody at dilution of 1:100



Immunohistochemistry of paraffin-embedded Rat kidney using CK-18 Polyclonal Antibody at dilution of 1:100



Immunohistochemistry of paraffin-embedded Human prostate using CK-18 Polyclonal Antibody at dilution of 1:100 (Elabscience Product Detected by Lifespan).



Immunofluorescence analysis of Hela cells using CK-18 Polyclonal Antibody at dilution of 1:100

Immunofluorescence analysis of U-2OS cells using CK-18 Polyclonal Antibody at dilution of 1:100

## Preparation & Storage

### Storage

Store at -20°C Valid for 12 months. Avoid freeze / thaw cycles.

### Shipping

The product is shipped with ice pack, upon receipt, store it immediately at the temperature recommended.

## Background

Cytokeratin 18 (CK18) has a molecular weight of 45 KDa, which is a low molecular weight type A cytokeratin. It is a marker of simple epithelium, including glandular epithelium. The stratified squamous epithelium is generally negative. CK18 is mainly used in the diagnosis of adenocarcinoma.