

## GSTCD Polyclonal Antibody

catalog number: E-AB-52996

**Note:** Centrifuge before opening to ensure complete recovery of vial contents.

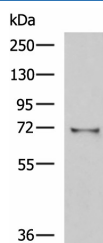
### Description

<b>Reactivity</b>	Human;Mouse
<b>Immunogen</b>	Fusion protein of human GSTCD
<b>Host</b>	Rabbit
<b>Isotype</b>	IgG
<b>Purification</b>	Antigen affinity purification
<b>Buffer</b>	Phosphate buffered solution, pH 7.4, containing 0.05% stabilizer and 50% glycerol.

### Applications

Applications	Recommended Dilution
<b>WB</b>	1:500-1:2000
<b>IHC</b>	1:70-1:350

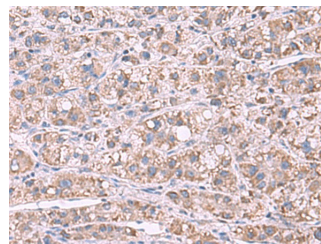
### Data



Western blot analysis of Mouse kidney tissue lysate using GSTCD Polyclonal Antibody at dilution of 1:1000

**Observed-MW:Refer to figures**

**Calculated-MW:71 kDa**



Immunohistochemistry of paraffin-embedded Human liver cancer tissue using GSTCD Polyclonal Antibody at dilution of 1:70(×200)

### Preparation & Storage

<b>Storage</b>	Store at -20°C Valid for 12 months. Avoid freeze / thaw cycles.
<b>Shipping</b>	The product is shipped with ice pack, upon receipt, store it immediately at the temperature recommended.

### Background

GSTCD (Glutathione S-Transferase C-Terminal Domain Containing) is a Protein Coding gene. Among its related pathways are Cytochrome P450 - arranged by substrate type. Gene Ontology (GO) annotations related to this gene include methyltransferase activity and rRNA methyltransferase activity.

### For Research Use Only