

Recombinant Human GAS6 Protein(Fc Tag)

Catalog Number: PDMH100330



Note: Centrifuge before opening to ensure complete recovery of vial contents.

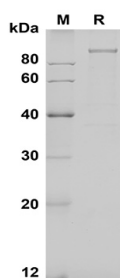
Description

| | |
|---------------------|---|
| Species | Human |
| Source | Mammalian-derived Human GAS6 proteins Ala31-Ala678, with an C-terminal Fc |
| Mol_Mass | 96.2 kDa |
| Accession | Q14393 |
| Bio-activity | Not validated for activity |

Properties

| | |
|-----------------------|--|
| Purity | > 90% as determined by reducing SDS-PAGE. |
| Endotoxin | < 1.0 EU/mg of the protein as determined by the LAL method |
| Storage | Generally, lyophilized proteins are stable for up to 12 months when stored at -20 to -80 °C. Reconstituted protein solution can be stored at 4-8°C for 2-7 days. Aliquots of reconstituted samples are stable at < -20°C for 3 months. |
| Shipping | This product is provided as lyophilized powder which is shipped with ice packs. |
| Formulation | Lyophilized from a 0.2 µm filtered solution in PBS with 5% Trehalose and 5% Mannitol. |
| Reconstitution | It is recommended that sterile water be added to the vial to prepare a stock solution of 0.5 mg/mL. Concentration is measured by UV-Vis. |

Data



SDS-PAGE analysis of Human GAS6 proteins, 2 µg/lane of Recombinant Human GAS6 proteins was resolved with SDS-PAGE under reducing conditions, showing bands at 100 KD

Background

For Research Use Only

A Reliable Research Partner in Life Science and Medicine
Tel:400-999-2100

Email:techsupport@elabscience.cn

Web:www.elabscience.cn

Rev. V1.5

Recombinant Human GAS6 Protein(Fc Tag)

Catalog Number: PDMH100330



The growth arrest-specific 6 gene (GAS6) is a member of the family of plasma vitamin K-dependent proteins, which are able to bind to phospholipids using an N-terminal gamma-carboxyglutamic acid domain. GAS6 is a vitamin K-dependent protein, plays a role in the survival, proliferation, migration, differentiation, adhesion, and apoptosis of cells. The growth arrest-specific 6 (GAS6) has been implicated in systemic inflammation and coagulation. Growth arrest-specific 6 (GAS6), plays a role in tumor progression by regulating growth in many cancers. GAS6, expressed by osteoblasts in the bone marrow, plays a significant role in the regulation of PCa cell survival during chemotherapy, which will have important implications for targeting metastatic disease. The GAS6/TYRO3-AXL-MERTK (TAM) signaling pathway is essential for full and sustained platelet activation, as well as thrombus stabilization. Inhibition of this pathway decreases platelet aggregation, shape change, clot retraction, aggregate formation under flow conditions, and surface expression of activation markers. It had been show that GAS6 signaling regulates invasion, proliferation, chemotherapy-induced apoptosis of prostate cancer (PCa) cells, and GAS6 secreted from osteoblasts in the bone marrow environment plays a critical role in establishing prostate tumor cell dormancy.

For Research Use Only

A Reliable Research Partner in Life Science and Medicine
Tel:400-999-2100

Email:techsupport@elabscience.cn

Web:www.elabscience.cn

Rev. V1.5