

Recombinant KLLN Monoclonal Antibody

catalog number: **AN301224L**

Note: Centrifuge before opening to ensure complete recovery of vial contents.

Description

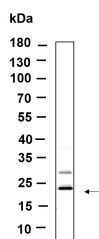
Reactivity	Human;Mouse;Rat
Immunogen	Recombinant Human KLLN protein
Host	Rabbit
Isotype	IgG, κ
Clone	4B11
Purification	Protein A
Buffer	PBS, 50% glycerol, 0.05% Proclin 300, 0.05% protein protectant.

Applications

Recommended Dilution

WB	1:1000-1:5000
-----------	---------------

Data



Western Blot with Recombinant KLLN Monoclonal Antibody
at dilution of 1:1000 dilution. Lane A: HeLa lysate.

Observed-MW:20 kDa

Calculated-MW:20 kDa

Preparation & Storage

Storage	Store at -20°C Valid for 12 months. Avoid freeze / thaw cycles.
Shipping	Ice bag

Background

The protein encoded by this intronless gene is found in the nucleus, where it can inhibit DNA synthesis and promote S phase arrest coupled to apoptosis. The expression of this DNA binding protein is upregulated by transcription factor p53.

For Research Use Only