

Recombinant MCM5 Monoclonal Antibody

catalog number: **E-AB-81429**

Note: Centrifuge before opening to ensure complete recovery of vial contents.

Description

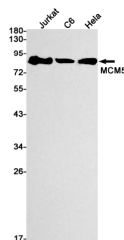
Reactivity	Human;Rat
Immunogen	A synthetic peptide of human MCM5
Host	Rabbit
Isotype	IgG
Clone	R05-5E5
Purification	Affinity Purified
Buffer	50mM Tris-Glycine(pH 7.4), 0.15M NaCl, 40% Glycerol, 0.05% stabilizer and 0.05% protective protein.

Applications

Recommended Dilution

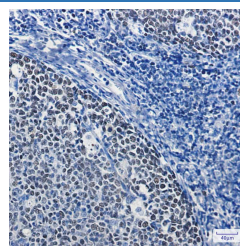
WB	1:1000-1:2000
IHC	1:50-1:100
IF	1:50-1:100

Data

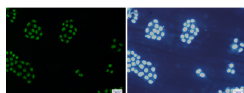


Western blot detection of MCM5 in Jurkat,C6,Hela cell lysates using MCM5 Rabbit mAb(1:1000 diluted).Predicted band size:82kDa.Observed band size:82kDa.

Observed-MW:82 kDa
Calculated-MW:82 kDa



Immunohistochemistry of MCM5 in paraffin-embedded Human tonsil using MCM5 Rabbit mAb at dilution 1:100



Immunofluorescence of MCM5(green) in Hela cells using MCM5 Rabbit mAb at dilution 1:200, and DAPI(blue)

Preparation & Storage

Storage	Store at -20°C Valid for 12 months. Avoid freeze / thaw cycles.
Shipping	The product is shipped with ice pack,upon receipt,store it immediately at the temperature recommended.

Background

For Research Use Only

The protein encoded by this gene is structurally very similar to the CDC46 protein from *S. cerevisiae*, a protein involved in the initiation of DNA replication. The encoded protein is a member of the MCM family of chromatin-binding proteins and can interact with at least two other members of this family. The encoded protein is upregulated in the transition from the G0 to G1/S phase of the cell cycle and may actively participate in cell cycle regulation.

For Research Use Only