

MCM3 Polyclonal Antibody

catalog number: **E-AB-40230**

Note: Centrifuge before opening to ensure complete recovery of vial contents.

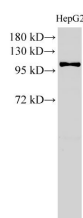
Description

Reactivity	Human;Mouse;Rat
Immunogen	Recombinant Human DNA replication licensing factor MCM3 protein
Host	Rabbit
Isotype	IgG
Purification	Antigen Affinity Purification
Buffer	PBS with 0.05% Proclin300, 1% protective protein and 50% glycerol, pH7.4

Applications

WB	1:500-1:1000
IHC	1:50-1:200

Data

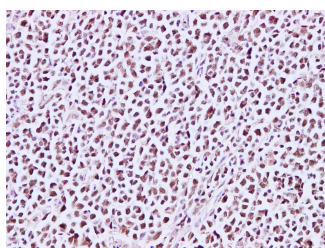


Western Blot analysis of HepG2 cell using MCM3 Polyclonal

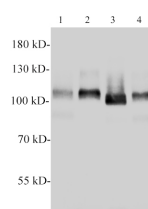
Antibody at dilution of 1:500

Observed-MW:100 kDa

Calculated-MW:91,96 kDa



Immunohistochemistry of paraffin-embedded Human lymph node using MCM3 Polyclonal Antibody at dilution of 1:200



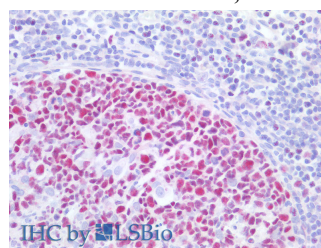
Western blotting with anti-MCM3 polyclonal antibody at

dilution of 1:1000. Lane 1:PC-12 cell lysate,Lane 2:C6 cell lysate,lane 3:Raw264.7 cell lysate,lane 4:NIH/3T3 cell

lysate.

Observed-MW:100 kDa

Calculated-MW:91,96 kDa



Immunohistochemistry of paraffin-embedded Human tonsil using MCM3 Polyclonal Antibody at dilution of 1:200(Elabscience Product Detected by Lifespan).

Preparation & Storage

Storage	Store at -20°C Valid for 12 months. Avoid freeze / thaw cycles.
Shipping	The product is shipped with ice pack,upon receipt,store it immediately at the temperature recommended.

Background

For Research Use Only

Toll-free: 1-888-852-8623
Web: www.elabscience.com

Tel: 1-832-243-6086
Email: techsupport@elabscience.com

Fax: 1-832-243-6017

Rev. V2.0

The protein encoded by this gene is one of the highly conserved mini-chromosome maintenance proteins (MCM) that are involved in the initiation of eukaryotic genome replication. The hexameric protein complex formed by MCM proteins is a key component of the pre-replication complex (pre_RC) and may be involved in the formation of replication forks and in the recruitment of other DNA replication related proteins. This protein is a subunit of the protein complex that consists of MCM2-7. It has been shown to interact directly with mCM5/CDC46. This protein also interacts with and is acetylated by MCM3AP, a chromatin-associated acetyltransferase. The acetylation of this protein inhibits the initiation of DNA replication and cell cycle progression. Two transcript variants encoding different isoforms have been found for this gene.