

FITC Anti-Mouse Ly6G Antibody[1A8]

Catalog Number: E-AB-F1108UC

Note: Centrifuge before opening to ensure complete recovery of vial contents.

Description

Reactivity	Mouse
Host	Rat
Isotype	Rat IgG2a, κ
Clone No.	1A8
Isotype Control	FITC Rat IgG2a, κ Isotype Control[2A3] [Product E-AB-F09833C]
Conjugation	FITC
Conjugation Information	FITC is designed to be excited by the Blue laser (488 nm) and detected using an optical filter centered near 530 nm (e.g., a 525/40 nm bandpass filter).
Storage Buffer	Phosphate buffered solution, pH 7.2, containing 0.09% sodium azide and 1% BSA.

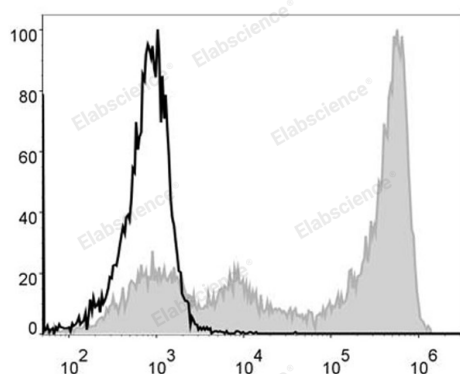
Applications

Recommended usage

FCM

Each lot of this antibody is quality control tested by flow cytometric analysis. Please check your vial before the experiment. Since applications vary, the appropriate dilutions must be determined for individual use. We suggest each investigator should titrate the reagent to obtain optimal results [The recommended concentration is 0.1-1 μg/10⁶ cells in 100 μL volume].

Data



C57BL/6 murine bone marrow cells are stained with FITC Anti-Mouse Ly6G Antibody (filled gray histogram). Unstained bone marrow cells (empty black histogram) are used as control.

Preparation & Storage

Storage	Keep as concentrated solution. This product can be stored at 2-8°C for 12 months. Please protected from prolonged exposure to light and do not freeze.
Shipping	Ice bag

Antigen Information

Alternate Names	Ly-6G;Ly-6G.1;Ly6g;Lymphocyte antigen 6G
Uniprot ID	P35461
Gene ID	546644

For Research Use Only

Background

Lymphocyte antigen 6 complex, locus G (Ly-6G), a 21-25 kD GPI-anchored protein, is expressed on the majority of myeloid cells in bone marrow and peripheral granulocytes