

# ITIH2 Polyclonal Antibody

catalog number: E-AB-53189

**Note:** Centrifuge before opening to ensure complete recovery of vial contents.

## Description

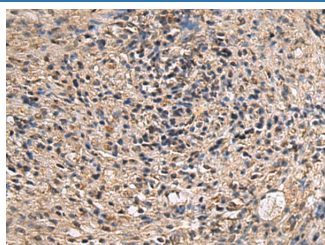
<b>Reactivity</b>	Human;Mouse
<b>Immunogen</b>	Fusion protein of human ITIH2
<b>Host</b>	Rabbit
<b>Isotype</b>	IgG
<b>Purification</b>	Antigen affinity purification
<b>Conjugation</b>	Unconjugated
<b>buffer</b>	Phosphate buffered solution, pH 7.4, containing 0.05% stabilizer and 50% glycerol.

## Applications

## Recommended Dilution

<b>IHC</b>	1:100-1:300
------------	-------------

## Data



Immunohistochemistry of paraffin-embedded Human brain tissue using ITIH2 Polyclonal Antibody at dilution of 1:70( $\times$ 200)

## Preparation & Storage

<b>Storage</b>	Store at -20°C Valid for 12 months. Avoid freeze / thaw cycles.
<b>Shipping</b>	The product is shipped with ice pack, upon receipt, store it immediately at the temperature recommended.

## Background

The inter-alpha-trypsin inhibitors (ITI) are a family of structurally related plasma serine protease inhibitors involved in extracellular matrix stabilization and in prevention of tumor metastasis. The ITI family contains multiple proteins made up of a light chain (see MIM 176870) and a variable number of heavy chains; ITIH2 (Inter-Alpha-Trypsin Inhibitor Heavy Chain 2) is a Protein Coding gene. Among its related pathways are Cell adhesion\_Cell-matrix glycoconjugates. GO annotations related to this gene include serine-type endopeptidase inhibitor activity and endopeptidase inhibitor activity. An important paralog of this gene is ITIH3.

## For Research Use Only