

# MTF2 Polyclonal Antibody

catalog number: E-AB-15219

**Note:** Centrifuge before opening to ensure complete recovery of vial contents.

## Description

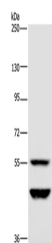
<b>Reactivity</b>	Human;Mouse
<b>Immunogen</b>	Recombinant protein of human MTF2
<b>Host</b>	Rabbit
<b>Isotype</b>	IgG
<b>Purification</b>	Affinity purification
<b>Conjugation</b>	Unconjugated
<b>buffer</b>	Phosphate buffered solution, pH 7.4, containing 0.05% stabilizer and 50% glycerol.

## Applications

## Recommended Dilution

<b>WB</b>	1:500-1:2000
-----------	--------------

## Data



Western Blot analysis of Human testis tissue using MTF2  
Polyclonal Antibody at dilution of 1:400

**Calculated-MV:67 kDa**

## Preparation & Storage

<b>Storage</b>	Store at -20°C Valid for 12 months. Avoid freeze / thaw cycles.
<b>Shipping</b>	The product is shipped with ice pack, upon receipt, store it immediately at the temperature recommended.

## Background

MTF2(MIER2(mesoderm induction early response 1, family member 2), also known as PCL2 or M96, is a protein that in humans is encoded by the MTF2 gene. It binds to the metal-regulating-element (MRE) of metallothionein gene promoter. May be involved in the activation of MT (metallothionein) genes in response to heavy-metal ions.

## For Research Use Only