

HID1 Polyclonal Antibody

catalog number: E-AB-13164

Note: Centrifuge before opening to ensure complete recovery of vial contents.

Description

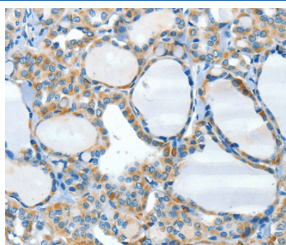
Reactivity	Human;Mouse
Immunogen	Synthetic peptide of human HID1
Host	Rabbit
Isotype	IgG
Purification	Affinity purification
Conjugation	Unconjugated
Buffer	Phosphate buffered solution, pH 7.4, containing 0.05% stabilizer and 50% glycerol.

Applications

Recommended Dilution

IHC	1:25-1:100
------------	------------

Data



Immunohistochemistry of paraffin-embedded Human thyroid cancer tissue using HID1 Polyclonal Antibody at dilution 1:50

Preparation & Storage

Storage	Store at -20°C Valid for 12 months. Avoid freeze / thaw cycles.
Shipping	The product is shipped with ice pack, upon receipt, store it immediately at the temperature recommended.

Background

C17orf28 (chromosome 17 open reading frame 28) is a 788 amino acid multi-pass membrane protein that is expressed in heart, skeletal muscle, colon, spleen, kidney, liver, small intestine and lung. C17orf28 may be involved in the development of cancers in a broad range of tissues. Existing as three alternatively spliced isoforms, C17orf28 is encoded by a gene mapping to human chromosome 17, which Human, Mouse takes up over 2.5% of the human genome with about 81 million bases encoding over 1,200 genes. Two key tumor suppressor genes are associated with chromosome 17, namely, p53 and BRCA1.

For Research Use Only