

## TCP1 Polyclonal Antibody

**catalog number: E-AB-40159**

**Note:** Centrifuge before opening to ensure complete recovery of vial contents.

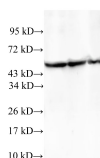
### Description

<b>Reactivity</b>	Human
<b>Immunogen</b>	Recombinant human T-complex protein 1 subunit alpha protein
<b>Host</b>	Rabbit
<b>Isotype</b>	IgG
<b>Purification</b>	Antigen Affinity Purification
<b>Buffer</b>	PBS with 0.05% proclin 300, 1% protective protein and 50% glycerol,pH7.4

### Applications

Applications	Recommended Dilution
<b>WB</b>	1:500-1:1000
<b>IHC</b>	1:50-1:100

### Data



Western Blot analysis of HeLa, A549 and 293T cells using  
TCP1 Polyclonal Antibody at dilution of 1:600

**Observed-MW:60 kDa**

**Calculated-MW:60 kDa**

### Preparation & Storage

<b>Storage</b>	Store at -20°C Valid for 12 months. Avoid freeze / thaw cycles.
<b>Shipping</b>	The product is shipped with ice pack,upon receipt,store it immediately at the temperature recommended.

### Background

The protein encoded by this gene is a molecular chaperone that is a member of the chaperonin containing TCP1 complex (CCT), also known as the TCP1 ring complex (TRiC). This complex consists of two identical stacked rings, each containing eight different proteins. Unfolded polypeptides enter the central cavity of the complex and are folded in an ATP-dependent manner. The complex folds various proteins, including actin and tubulin. Alternate transcriptional splice variants of this gene, encoding different isoforms, have been characterized. In addition, three pseudogenes that appear to be derived from this gene have been found.

### For Research Use Only