

Recombinant Human KPNA2 Protein (His Tag)

Catalog Number: PKSH032670

Note: Centrifuge before opening to ensure complete recovery of vial contents.

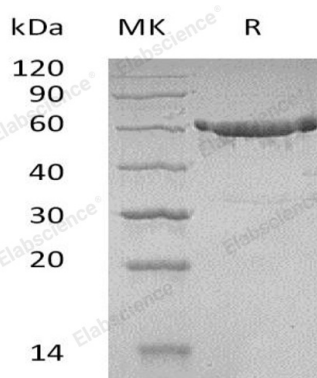
Description

Species	Human
Source	E.coli-derived Human KPNA2 protein Met 1-Phe529, with an N-terminal His
Calculated MW	60.0 kDa
Observed MW	46-63 kDa
Accession	P52292
Bio-activity	Not validated for activity

Properties

Purity	> 95 % as determined by reducing SDS-PAGE.
Concentration	Subject to label value.
Endotoxin	< 1.0 EU per µg of the protein as determined by the LAL method.
Storage	Store at < -20°C, stable for 6 months. Please minimize freeze-thaw cycles.
Shipping	This product is provided as liquid. It is shipped at frozen temperature with blue ice/gel packs. Upon receipt, store it immediately at < -20°C.
Formulation	Supplied as a 0.2 µm filtered solution of 20mM Tris-HCl, 1mM DTT, 20% Glycerol, pH 8.0.

Data



> 95 % as determined by reducing SDS-PAGE.

Background

Karyopherin Subunit α -2 (KPNA2) belongs to the importin alpha family. KPNA2 is widely expressed in many tissues and contains an N-terminal hydrophilic region, a hydrophobic central region composed of 10 repeats, and a short hydrophilic C-terminus. KPNA2 interacts with the NLSs of DNA helicase Q1 and SV40 T antigen and may be involved in the nuclear transport of proteins. KPNA2 also may play a role in V(D)J recombination. KPNA2 functions in nuclear protein importantly as an adapter protein for nuclear receptor KPNB1.

For Research Use Only

Toll-free: 1-888-852-8623
Web: www.elabscience.com

Tel: 1-832-243-6086
Email: techsupport@elabscience.com

Fax: 1-832-243-6017