

SERPINB4 Polyclonal Antibody

catalog number: **E-AB-91113**

Note: Centrifuge before opening to ensure complete recovery of vial contents.

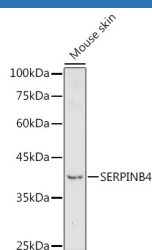
Description

Reactivity	Mouse;Rat
Immunogen	A synthetic peptide of human SERPINB4
Host	Rabbit
Isotype	IgG
Purification	Affinity purification
Buffer	Phosphate buffered solution, pH 7.4, containing 0.05% stabilizer and 50% glycerol.

Applications Recommended Dilution

WB	1:200-1:2000
-----------	--------------

Data



Western blot analysis of extracts of Mouse skin using SERPINB4 Polyclonal Antibody at 1:1000 dilution.

Observed-MV:45 kDa

Calculated-MV:44 kDa

Preparation & Storage

Storage	Store at -20°C Valid for 12 months. Avoid freeze / thaw cycles.
Shipping	The product is shipped with ice pack,upon receipt,store it immediately at the temperature recommended.

Background

The protein encoded by this gene is a member of the serpin family of serine protease inhibitors. The encoded protein is highly expressed in many tumor cells and can inactivate granzyme M, an enzyme that kills tumor cells. This protein, along with serpin B3, can be processed into smaller fragments that aggregate to form an autoantigen in psoriasis, probably by causing chronic inflammation.

For Research Use Only