

GPR152 Polyclonal Antibody

catalog number: E-AB-18040

Note: Centrifuge before opening to ensure complete recovery of vial contents.

Description

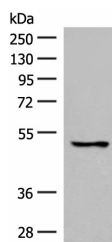
Reactivity	Human;Mouse
Immunogen	Synthetic peptide of human GPR152
Host	Rabbit
Isotype	IgG
Purification	Antigen affinity purification
Conjugation	Unconjugated
Buffer	Phosphate buffered solution, pH 7.4, containing 0.05% stabilizer and 50% glycerol.

Applications

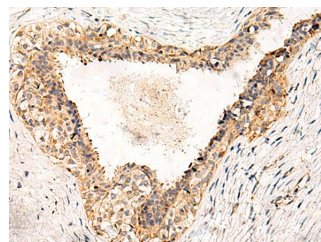
Recommended Dilution

WB	1:500-1:2000
IHC	1:50-1:300

Data



Western blot analysis of 293T cell lysate using GPR152 Polyclonal Antibody at dilution of 1:600
Observed-MW:Refer to figures
Calculated-MW:51 kDa



Immunohistochemistry of paraffin-embedded Human breast cancer tissue using GPR152 Polyclonal Antibody at dilution of 1:55(×200)

Preparation & Storage

Storage	Store at -20°C Valid for 12 months. Avoid freeze / thaw cycles.
Shipping	The product is shipped with ice pack,upon receipt,store it immediately at the temperature recommended.

Background

GPR152 (G Protein-Coupled Receptor 152) is a Protein Coding gene. Gene Ontology (GO) annotations related to this gene include G-protein coupled receptor activity. An important paralog of this gene is FPR2.