

AMY2A Polyclonal Antibody

catalog number: E-AB-14766

Note: Centrifuge before opening to ensure complete recovery of vial contents.

Description

Reactivity	Human;Mouse
Immunogen	Recombinant protein of human AMY2A
Host	Rabbit
Isotype	IgG
Purification	Affinity purification
Conjugation	Unconjugated
Buffer	Phosphate buffered solution, pH 7.4, containing 0.05% stabilizer and 50% glycerol.

Applications

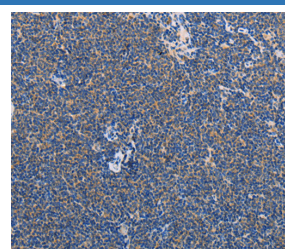
Recommended Dilution

WB	1:1000-1:5000
IHC	1:50-1:200

Data



Western Blot analysis of Mouse pancreas tissue using AMY2A Polyclonal Antibody at dilution of 1:1550
Calculated-MW:58 kDa



Immunohistochemistry of paraffin-embedded Human Lymphoma using AMY2A Polyclonal Antibody at dilution of 1:60

Preparation & Storage

Storage	Store at -20°C Valid for 12 months. Avoid freeze / thaw cycles.
Shipping	The product is shipped with ice pack, upon receipt, store it immediately at the temperature recommended.

Background

Amylases are secreted proteins that hydrolyze 1,4-alpha-glucoside bonds in oligosaccharides and polysaccharides, and thus catalyze the first step in digestion of dietary starch and glycogen. The human genome has a cluster of several amylase genes that are expressed at high levels in either salivary gland or pancreas. This gene encodes an amylase isoenzyme produced by the pancreas.